

The GSW Business Tunnel Example Guide





GSW Business Tunnel Example Guide

These examples are to help guide you through the configuration of your GSW Business Tunnel for many different scenarios.

The GSW Business Tunnel can do local, dynamic or remote port forwarding. The examples are categorized by their type of port forwarding. Local port forwarding examples begin with L and then are numbered sequentially. Remote and Dynamic examples follow the same pattern.

Table of Contents

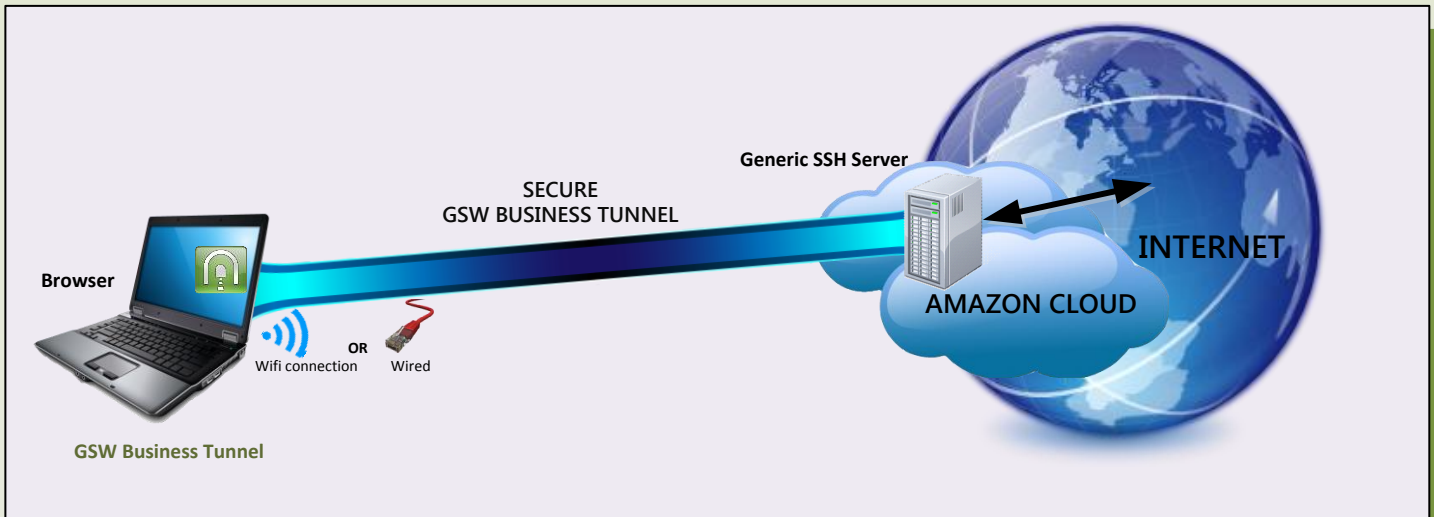
Page	Example	
1	D01	Browse the Internet by Tunneling through a Generic SSH Server on Amazon Cloud
2	D02	Securely Connect to your Home Computer from Work and use it to Browse the Internet
3	D03	Securely Connect to your Home Computer from Anywhere and Browse the Internet
4	L01	Make a Telnet Connection Secure using the GSW Business Tunnel
5	L02	Securely Access Blocked Website from Headquarters (blocked by company proxy filter)
6	L03	Securely Access Blocked Website from Home due to Company Proxy Filter
7	L04	Securely Access Email from Anywhere
8	L05	Securely Remote Desktop to Work from Anywhere
9	R01	Securely Browse the company intranet from home, even though company does not allow incoming connections
10	R02	Browse the Company Intranet from Sales Branch
11	R03	Browse the Company Intranet from a Sales Branch 2
12	R04	Browse the Company Intranet from Home
13	R05	Browse the Company Intranet from Sales Branch using address 0.0.0.0
14		Notes: How to Configure Windows Firewall to Allow Access to an SSH Server



GSW Business Tunnel

Example D01

Browse Internet Securely by Tunneling through a Generic SSH Server on Amazon Cloud



CASE: Securely Browse the Internet by Tunneling through a Generic SSH Server on Amazon Cloud

You can securely browse the Internet using the GSW Business Tunnel by using a generic SSH Server on the Amazon Cloud.

Laptop- GSW Business Tunnel Settings

SSH Host and Authentication Settings

1. Set Address of SSH Server Host. This is provided when you set up your Amazon Cloud.
2. Set Authentication Requirements. This is the logon ID and the private key provided when you set up the Amazon Cloud.

Laptop- GSW Business Channel Settings

1. Select Dynamic Forwarding.
2. Use the loopback address
3. Choose an available port for the local port.

Laptop- Browser Configuration

IE -> TOOLS -> Internet Options -> Connections ->

LAN settings

1. Enable Proxy Server

2. Click on Advanced
Opens Proxy Settings.

3. Configure Proxy Address and Port Number
The channel configuration for the local address and local port is used in the browser configuration. These must match. (See arrow)

4. Click OK, OK, Apply
Your browser is now configured to use the Tunnel.
In some instances it applies to new browsers opened.

Note: Each browser has a way to enable a proxy server for the LAN.
This example shows Microsoft Internet Explorer 10 (IE 10).

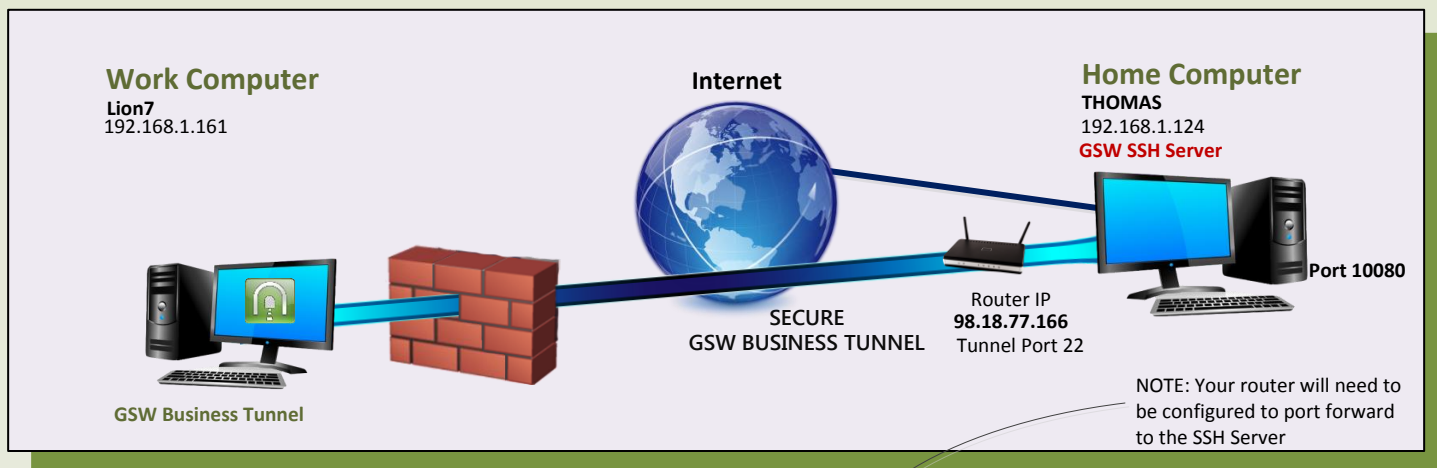


GSW Business Tunnel

Page 2

Example D02

Securely connect to your home computer from work and use it to browse the internet



CASE: Securely create a tunnel through a firewall to a SSH Server and Browse the Internet

Your company firewall blocks all internet browsing. You have received permission to access certain web sites for work, but company policy will not allow the firewall to be opened up to HTTP traffic. The company firewall is open to SSH traffic. You can create a secure tunnel to a SSH server located at home (or anywhere else that you have access) and browse the internet.

Lion7 – GSW Business Tunnel Configuration

SSH Host and Authentication Settings

1. Set Address of SSH Server Host. In this case, the router is forwarding to the SSH Server Host, so we use the router IP Address
2. Set Authentication Requirements. In this case, Authentication consisted of: Logon name and a password.

Lion7 – Channel Configuration

1. Select Dynamic forwarding type.
2. Set the loopback address (127.0.0.1) as the local address.
3. Choose available port number to assign for local port. We selected 10080.

Note: Make sure that the local address and local port are the same ones used in the browser proxy configurations for SOCKS address and Port (see right)

NetGear N300 Router – Port Forwarding Configuration

#	Service Name	External Start Port	External End Port	Internal Start Port	Internal End Port	Internal IP address
1	GSW SSH	22	22	22	22	192.168.1.124

Thomas – GSW SSH Server Configuration

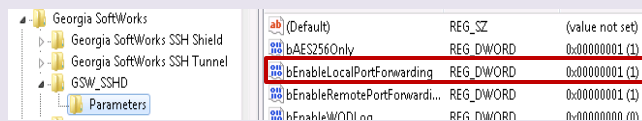
Make sure local port forwarding is enabled on the SSH Server. With the GSW SSH Server, the setting is in the registry, as shown below.

X64 system:

HKEY_LOCAL_MACHINE\SOFTWARE\Wow6432Node\Georgia SoftWorks\GSW_SSHD\Parameters

X86 system:

HKEY_LOCAL_MACHINE\SOFTWARE\Georgia SoftWorks\GSW_SSHD\Parameters



Lion7 – Browser Configuration

1. Enable Proxy Server

IE -> TOOLS -> Internet Options -> Connections -> Advanced

2. Configure SOCKS Address and Port

Note: Each browser has a way to enable a proxy server for the LAN. This example shows Microsoft Internet Explorer 10 (IE 10).

Lion7 – Browser Usage

Open Browser and enter the URL to start browsing.

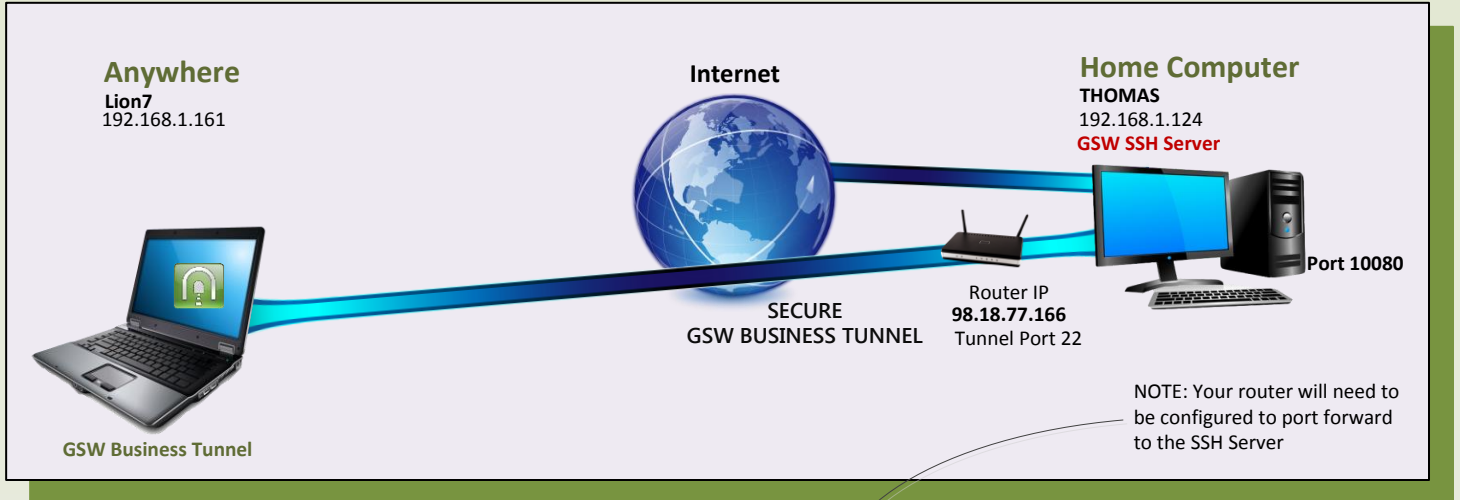




GSW Business Tunnel

Example D03

Securely Connect to Your Home Computer From Anywhere Browse the Internet



CASE: Connect to your Home Computer from Anywhere and Browse the Internet
You are traveling and want to browse the internet, but you want to make sure your connection is secure. Using the GSW Business Tunnel, you can securely connect from your laptop to your home computer with an SSH Tunnel and then securely browse the internet.

****Note:** This example is the same configuration as D02.

NetGear N300 Router – Port Forwarding Configuration

#	Service Name	External Start Port	External End Port	Internal Start Port	Internal End Port	Internal IP address
1	GSW SSH	22	22	22	22	192.168.1.124

Thomas – GSW SSH Server Configuration

Make sure local port forwarding is enabled on the SSH Server. With the GSW SSH Server, the setting is in the registry, as shown below.

x64 system:

HKEY_LOCAL_MACHINE\SOFTWARE\Wow6432Node\Georgia SoftWorks\GSW_SSHD\Parameters

x86 system:

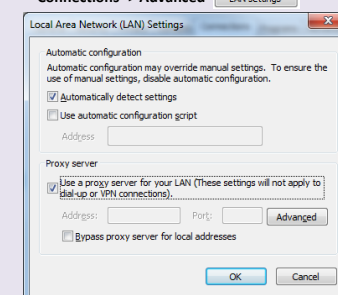
HKEY_LOCAL_MACHINE\SOFTWARE\Georgia SoftWorks\GSW_SSHD\Parameters

Georgia SoftWorks	(Default)	REG_SZ	(value not set)
Georgia SoftWorks SSH Shield	bAES256Only	REG_DWORD	0x00000001 (1)
Georgia SoftWorks SSH Tunnel	bEnableLocalPortForwarding	REG_DWORD	0x00000001 (1)
GSW_SSHD	bEnableRemotePortForwarding...	REG_DWORD	0x00000001 (1)
Parameters	bEnableWMI on	REG_DWORD	0x00000000 (0)

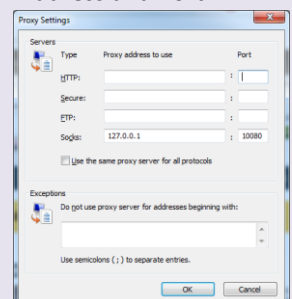
Lion7 – Browser Configuration

1. Enable Proxy Server

IE -> TOOLS -> Internet Options -> Connections -> Advanced

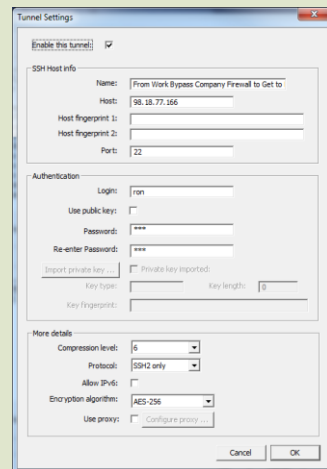


2. Configure SOCKS Address and Port



Note: Each browser has a way to enable a proxy server for the LAN. This example shows Microsoft Internet Explorer 10 (IE 10).

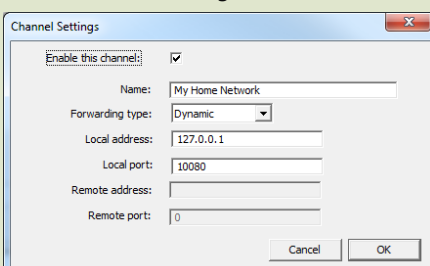
Lion7 – GSW Business Tunnel Configuration



SSH Host and Authentication Settings

1. Set Address of SSH Server Host. In this case, the router is forwarding to the SSH Server Host, so we use the router IP Address
2. Set Authentication Requirements. In this case, Authentication consisted of: Logon name and a password.

Lion7 – Channel Configuration



1. Select Dynamic forwarding type.
2. Set the loopback address (127.0.0.1) as the local address.
3. Choose available port number to assign for local port. We selected 10080.

Note: Make sure that the local address and local port are the same ones used in the browser proxy configurations for SOCKS address and Port (see right)

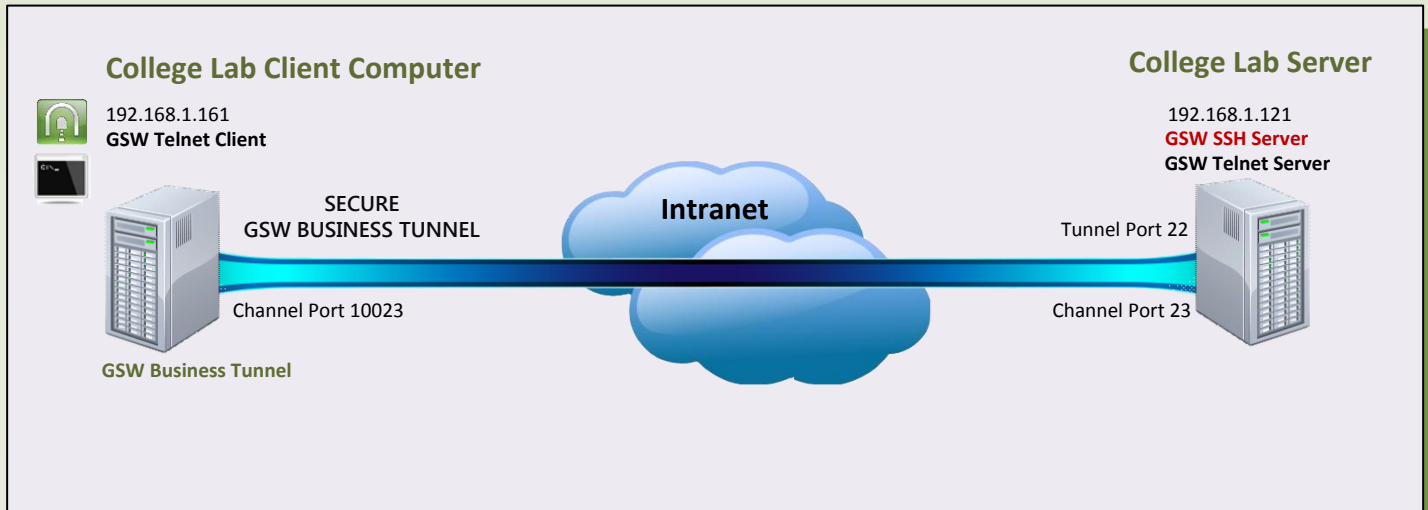
Lion7 – Browser Usage

Open Browser and enter the URL to start browsing.





Make a Telnet Connection Secure using the GSW Business Tunnel



Case:

A local technical college wants to demonstrate how you can secure telnet with an SSH Tunnel. In the technical lab they set up a telnet connection and use a network monitoring tool to observe the data. Then as shown in this example they set up the GSW Business Tunnel and then create the Telnet connection. Now when they monitor the line the data is encrypted

Lab Client Computer – GSW Business Tunnel Configuration

SSH Host and Authentication Settings

1. Set Address of SSH Server Host.
2. Set Authentication Requirements. In this case, Authentication consisted of: Logon name and a password.

College Lab Server – GSW SSH Server Configuration

Make sure local port forwarding is enabled on the SSH Server. With the GSW SSH Server, the setting is in the registry, as shown below.

x64 system:

HKEY_LOCAL_MACHINE\SOFTWARE\Wow6432Node\Georgia SoftWorks\GSW_SSHD\Parameters

x86 system:

HKEY_LOCAL_MACHINE\SOFTWARE\Georgia SoftWorks\GSW_SSHD\Parameters

Georgia SoftWorks	(Default)	REG_SZ	(value not set)
Georgia SoftWorks SSH Shield	bAES256Only	REG_DWORD	0x00000001 (1)
Georgia SoftWorks SSH Tunnel	bEnableLocalPortForwarding	REG_DWORD	0x00000001 (1)
GSW_SSHD	bEnableRemotePortForwarding	REG_DWORD	0x00000001 (1)
Parameters	bEnableWinRM on	REG_DWORD	0x00000000 (0)

Lab Client Computer – Telnet Client Shortcut

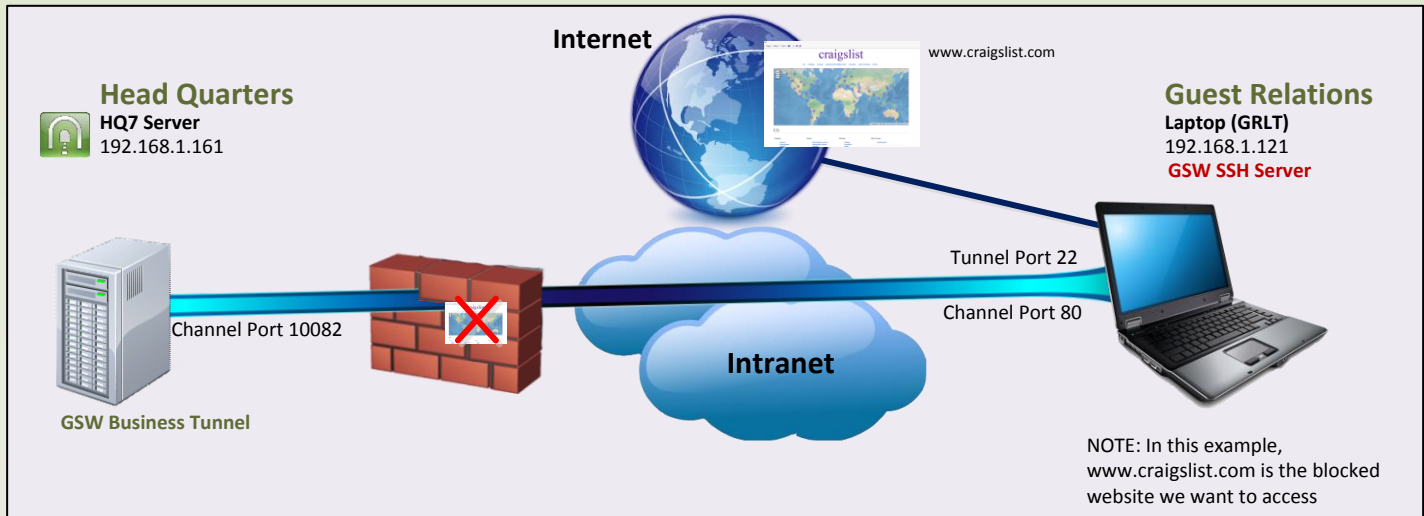
Using the local address and port configured in the channel configuration, modify the Telnet Client Shortcut
@gs_clnt.exe -h127.0.0.1 -P10023 -udavid -phidden -d.

Lab Client Computer – Channel Configuration

1. Select Local forwarding type.
2. Set the loopback address (127.0.0.1) as the local address.
3. Choose available port number to assign for local port. We selected 10023.
4. For the remote address, use the loopback address 127.0.0.1
5. For the remote port, use Port 23, the common Telnet Server port.



Securely Access Blocked Website from Headquarters via Computer on Company Intranet



Case:

Access to www.craigslist.com is blocked by the company proxy filter in Headquarters. However, the company has some older office furniture for sale on craigslist. The facilities manager wants to view the ad. He knows that the training laptop on the company intranet in the guest relations building has access to the internet and is running the GSW SSH Server.

The HQ7 (running the GSW Business Tunnel) creates a tunnel to the Guest Relations Laptop (GRLT) which is running the GSW SSH Server and has access to www.craigslist.com

HQ7 – Channel Configuration

1. Select Local forwarding type.
2. Set the loopback address (127.0.0.1) as the local address.
3. Choose available port number to assign for local port. We selected 10082.
4. Fill in the host address of the blocked website as the remote address.
5. Use 80 for the Remote Port

HQ7 – GSW Business Tunnel Configuration

SSH Host and Authentication Settings

1. Set Address of SSH Server Host.
2. Set Authentication Requirements. In this case, Authentication consisted of: Logon name and a password.

GRLT – GSW SSH Server Configuration

Make sure local port forwarding is enabled on the SSH Server. With the GSW SSH Server, the setting is in the registry, as shown below.

x64 system:
HKEY_LOCAL_MACHINE\SOFTWARE\Wow6432Node\Georgia SoftWorks\GSW_SSHD\Parameters

x86 system:
HKEY_LOCAL_MACHINE\SOFTWARE\Georgia SoftWorks\GSW_SSHD\Parameters

Georgia SoftWorks	(Default)	REG_SZ	(value not set)
Georgia SoftWorks SSH Shield	bAES256Only	REG_DWORD	0x00000001 (1)
Georgia SoftWorks SSH Tunnel	bEnableLocalPortForwarding	REG_DWORD	0x00000001 (1)
GSW_SSHD	bEnableRemotePortForwarding...	REG_DWORD	0x00000001 (1)
Parameters	bEnableWinlogon	REG_DWORD	0x00000000 (0)

HQ7 – Browser Configuration

1. Open browser and enter URL http://127.0.0.1:10082 (from the channel configuration)
2. Browse www.craigslist.com



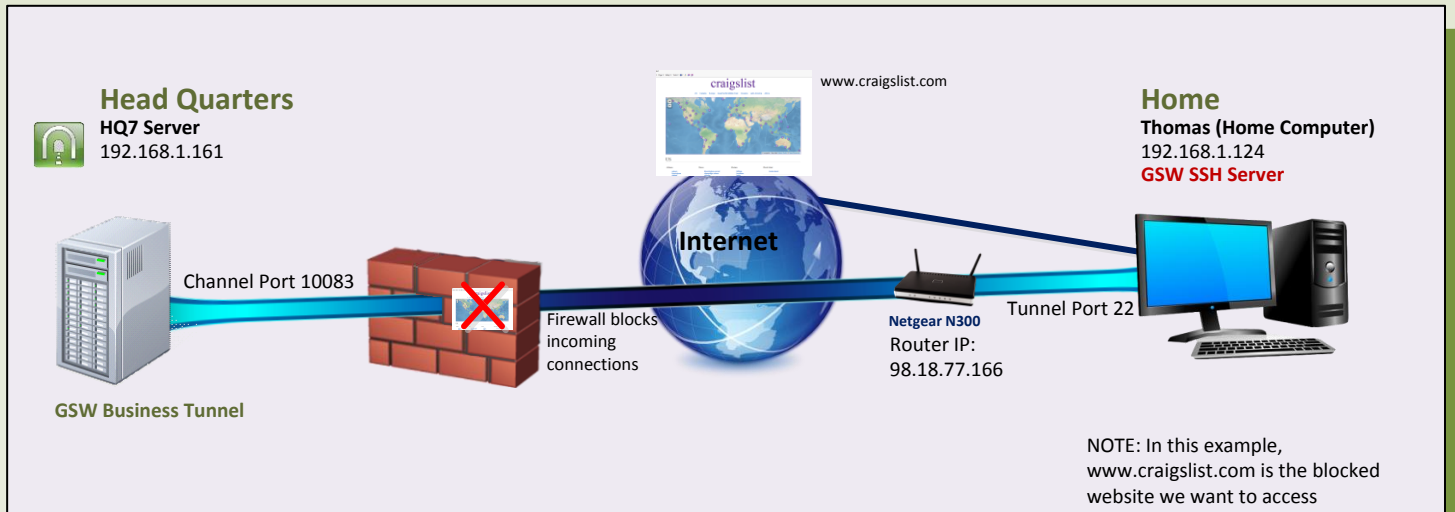
*Note: This example works as long as the links and objects on the website have relative addresses



GSW Business Tunnel

Example L03

Securely Access Blocked Website via Home Computer due to Company Proxy Filter



CASE: Access Blocked Web Site from home (due to company proxy filter)

Access to www.craigslist.com is blocked by the company proxy filter at Head Quarters. However, the facilities manager needs to access craigslist to find old desks for sale in the area. His computer (Thomas) at home is running the GSW SSH Server.

The developer can create a Tunnel to his home computer and then browse www.craigslist.com from HQ7.

NetGear N300 Router – Port Forwarding Configuration

Your router will need to be configured to port forward to the SSH Server

	Service Name	External Start Port	External End Port	Internal Start Port	Internal End Port	Internal IP address
1	GSW SSH	22	22	22	22	192.168.1.124

Thomas – GSW SSH Server Configuration

Make sure local port forwarding is enabled on the SSH Server. With the GSW SSH Server, the setting is in the registry, as shown below.

x64 system:

HKEY_LOCAL_MACHINE\SOFTWARE\Wow6432Node\Georgia SoftWorks\GSW_SSHD\Parameters

x86 system:

HKEY_LOCAL_MACHINE\SOFTWARE\Georgia SoftWorks\GSW_SSHD\Parameters

Georgia SoftWorks	(Default)	REG_SZ	(value not set)
Georgia SoftWorks SSH Shield	bAES256Only	REG_DWORD	0x00000001 (1)
Georgia SoftWorks SSH Tunnel	bEnableLocalPortForwarding	REG_DWORD	0x00000001 (1)
GSW_SSHD	bEnableRemotePortForwarding	REG_DWORD	0x00000001 (1)
Parameters	bEnableWinlogon	REG_DWORD	0x00000000 (0)

HQ7 – Browser Configuration

1. Open browser and enter URL
http://127.0.0.1:10083
(from the channel configuration)
and browse www.craigslist.com



*Note: This example works as long as the links and objects on the website have relative addresses

HQ7 – GSW Business Tunnel Configuration

Tunnel Settings

Enable this tunnel: ☒

SSH Host Info

Name: Access Web Site Blocked by Proxy from Home ?

Host: 98.18.77.166

Host fingerprint 1:

Host fingerprint 2:

Port: 22

Authentication

Logon: ron

Use public key: ☐

Password: ***

Re-enter Password: ***

Import private key ... ☐ Private key imported:

Key type: Key length: 0

Key fingerprint:

More details

Compression level: 6

Protocol: SSH2 only

Allow IPv6: ☐

Encryption algorithm: AES-256

Use proxy: ☐ Configure proxy ...

Cancel OK

SSH Host and Authentication Settings

1. Set Address of SSH Server Host. In this case, the router is forwarded to the SSH Server Host, so we use the router IP Address
2. Set Authentication Requirements. In this case, Authentication consisted of: Logon name and a password.

HQ7 – Channel Configuration

Channel Settings

Enable this channel: ☒

Name: Access Web Page using Thomas - georgiasoftw

Forwarding type: Local

Local address: 127.0.0.1

Local port: 10083

Remote address: www.craigslist.com

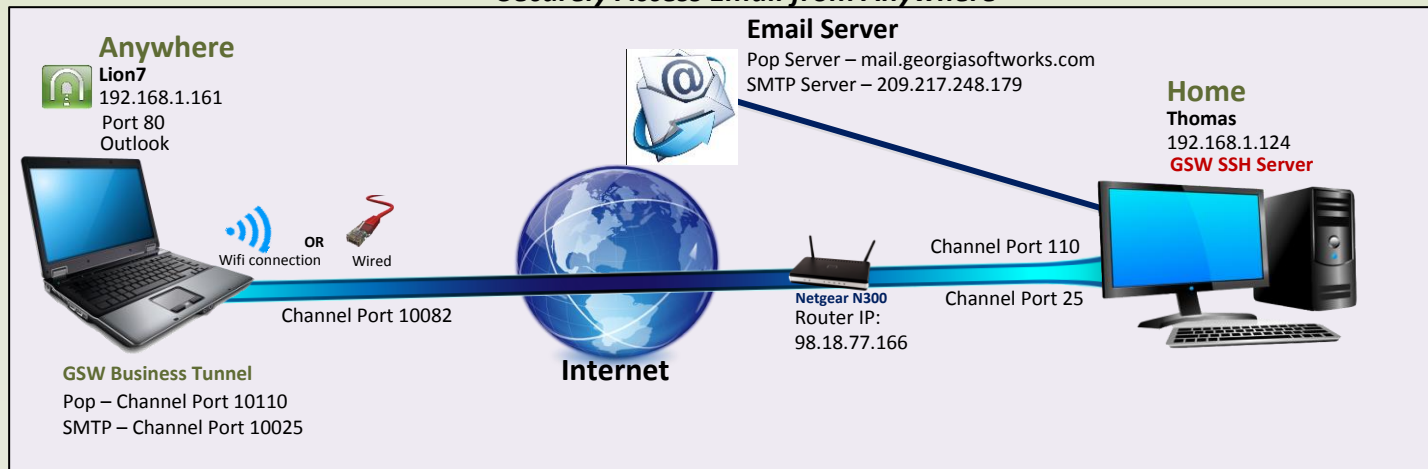
Remote port: 80

Cancel OK

1. Select Local forwarding type.
2. Set the loopback address (127.0.0.1) as the local address.
3. Choose available port number to assign for local port. We selected 10083.
4. Fill in the host address of the blocked website as the remote address.
5. Use 80 for the remote port



Securely Access Email from Anywhere



CASE: Securely check/send email from anywhere that has internet access
Create a secure GSW Business Tunnel to a secure SSH Server and check/send email. In this example you could be at a public Wi-Fi location, a hospital, airport, library, coffee shop or at a corporate business partners site. You can use your Business Tunnel to ensure a secure connection to a safe location to check/send email. This example requires 2 channels to be used with one Tunnel.

NetGear N300 Router – Port Forwarding Configuration

Your router may need to be configured to port forward to the computer at your home, Thomas.

	Service Name	External Start Port	External End Port	Internal Start Port	Internal End Port	Internal IP address
	GSW SSH	22	22	22	22	192.168.1.124

Lion7 – GSW Business Tunnel Configuration

SSH Host and Authentication Settings

1. Set Address of SSH Server Host. In this case, the router is forwarded to the SSH Server Host, so we use the router IP Address
2. Set Authentication Requirements. In this case, Authentication consisted of: Logon name and a password.

Thomas – GSW SSH Server Configuration

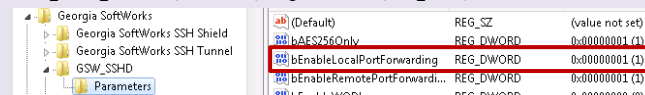
Make sure local port forwarding is enabled on the SSH Server. With the GSW SSH Server, the setting is in the registry, as shown below.

x64 system:

HKEY_LOCAL_MACHINE\SOFTWARE\Wow6432Node\Georgia SoftWorks\GSW_SSHD\Parameters

x86 system:

HKEY_LOCAL_MACHINE\SOFTWARE\Georgia SoftWorks\GSW_SSHD\Parameters



Microsoft Outlook Example (on Lion7):

Lion7 – POP Channel Configuration

1. Select forwarding type to local.
2. Set the loopback address (127.0.0.1) as the local address.
3. Choose available port number for local port. We chose 10110.
4. The Remote address is the address of the mail server.
5. The remote port 110.

Lion7 – SMTP Channel Configuration

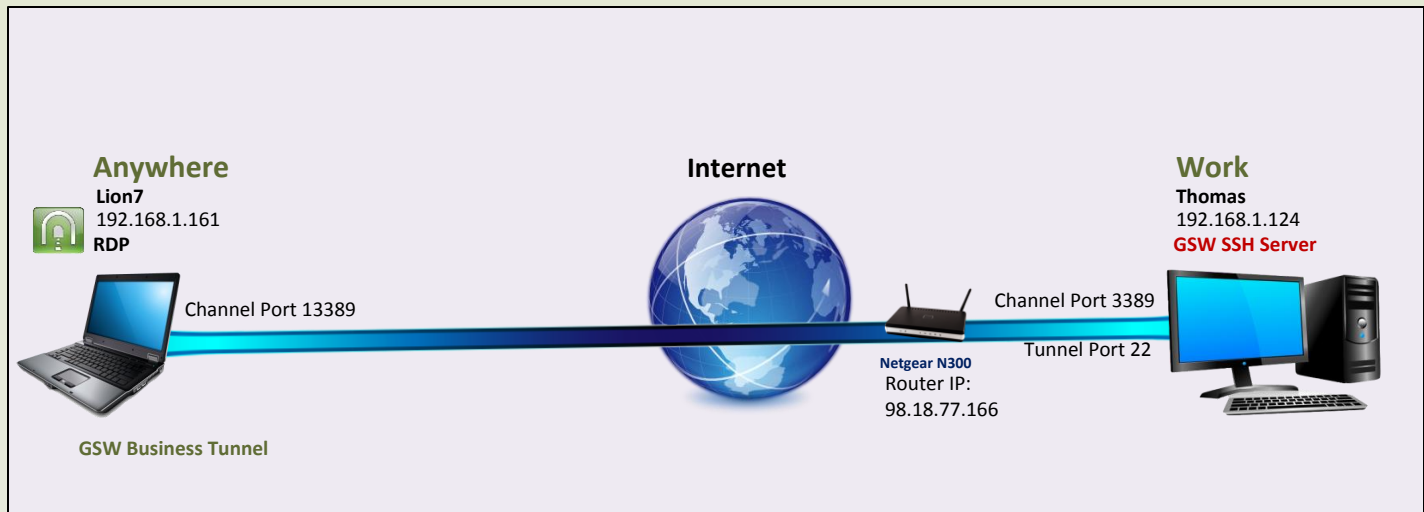
1. Select forwarding type to local.
2. Use the loopback address as the local address.
3. choose available local port. We chose 10025.
4. Set the remote address of the mail server. We entered the IP address this time.
5. Set the remote port to 25.



GSW Business Tunnel

Example L05

Securely Remote Desktop to Work from Anywhere



CASE: Securely Remote Desktop to Work From Anywhere

You are a traveling and want to Remote Desktop to your work computer. You can do this from anywhere using the GSW Business Tunnel.

Lion7 – GSW Business Tunnel Configuration

SSH Host and Authentication Settings

1. Set Address of SSH Server Host. In this case, the router is forwarded to the SSH Server Host, so we use the router IP Address
2. Set Authentication Requirements. In this case, Authentication consisted of: Logon name and a password.

NetGear N300 Router – Port Forwarding Configuration

Your router will need to be configured to port forward to the SSH Server

#	Service Name	External Start Port	External End Port	Internal Start Port	Internal End Port	Internal IP address
1	GSW SSH	22	22	22	22	192.168.1.124

Thomas – GSW SSH Server Configuration

Make sure local port forwarding is enabled on the SSH Server. With the GSW SSH Server, the setting is in the registry, as shown below.

x64 system:

HKEY_LOCAL_MACHINE\SOFTWARE\Wow6432Node\Georgia SoftWorks\GSW_SSHD\Parameters

x86 system:

HKEY_LOCAL_MACHINE\SOFTWARE\Georgia SoftWorks\GSW_SSHD\Parameters

Georgia SoftWorks	(Default)	REG_SZ	(value not set)
Georgia SoftWorks\SSH Shield	bAES256Only	REG_DWORD	0x00000001 (1)
Georgia SoftWorks\SSH Tunnel	bEnableLocalPortForwarding	REG_DWORD	0x00000001 (1)
GSW_SSHD	bEnableRemotePortForwarding	REG_DWORD	0x00000001 (1)
Parameters	bEnableMOTD on	REG_DWORD	0x00000000 (0)

Lion7 – RDP Channel Configuration

1. Select Local forwarding type.
2. Set the loopback address (127.0.0.1) as the local address.
3. Choose available port number to assign for local port. We selected 13389.
4. Fill in the remote address
5. The remote port is the RDP Port number (3389)

Lion7 – Remote Desktop Configuration

From Lion7, Open Remote Desktop (run mstsc from Start Orb)

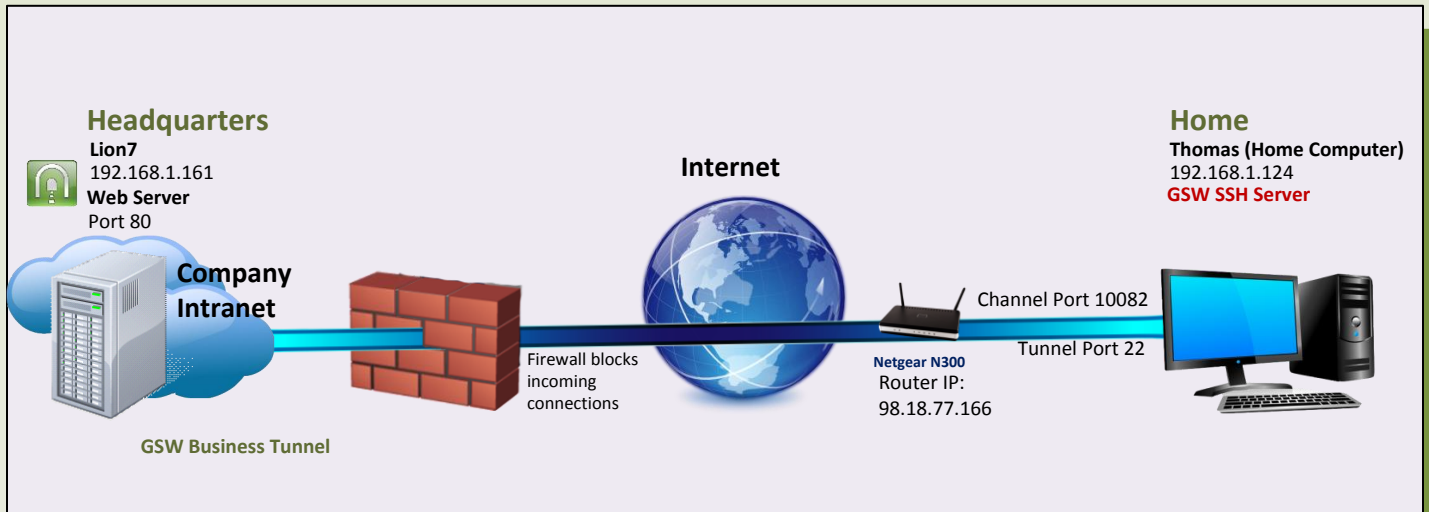
Enter the address as shown using the loopback address and the local port number from the channel configuration

Click Connect – enter your credentials to log on

Note By using the GSW Business Tunnel, you can securely RDP without having to create certificates



Securely Browse the Company Intranet From Home, Even Though Company Does Not Allow Incoming Connections



CASE: Browse Company Intranet from Home

Your company does not allow incoming connections. You can set up the GSW Business Tunnel from work so that you can browse the company intranet from home. The Web Server is on the same computer as the Business Tunnel.

Lion7 – GSW Business Tunnel Configuration

SSH Host and Authentication Settings

1. Set Address of SSH Server Host. In this case, the router is forwarded to the SSH Server Host, so we use the router IP Address
2. Set Authentication Requirements. In this case, Authentication consisted of: Logon name and a password.

NetGear N300 Router – Port Forwarding Configuration

Your router may need to be configured to port forward to the home computer, Thomas.

#	Service Name	External Start Port	External End Port	Internal Start Port	Internal End Port	Internal IP address
1	GSW SSH	22	22	22	22	192.168.1.124

Thomas – GSW SSH Server Configuration

Make sure remote port forwarding is enabled on the SSH Server. With the GSW SSH Server, the setting is in the registry, as shown below.

x64 system:

HKEY_LOCAL_MACHINE\SOFTWARE\Wow6432Node\Georgia SoftWorks\GSW_SSHD\Parameters

x86 system:

HKEY_LOCAL_MACHINE\SOFTWARE\Georgia SoftWorks\GSW_SSHD\Parameters

ab (Default)	REG_SZ	(value not set)
bAES256Only	REG_DWORD	0x00000001 (1)
bEnableLocalPortForwarding	REG_DWORD	0x00000001 (1)
bEnableRemotePortForwarding	REG_DWORD	0x00000001 (1)

Thomas – Browser Configuration

Open browser and enter URL: <http://127.0.0.1:10082> (from the channel configuration) and browse the company intranet



Lion7 – Channel Configuration

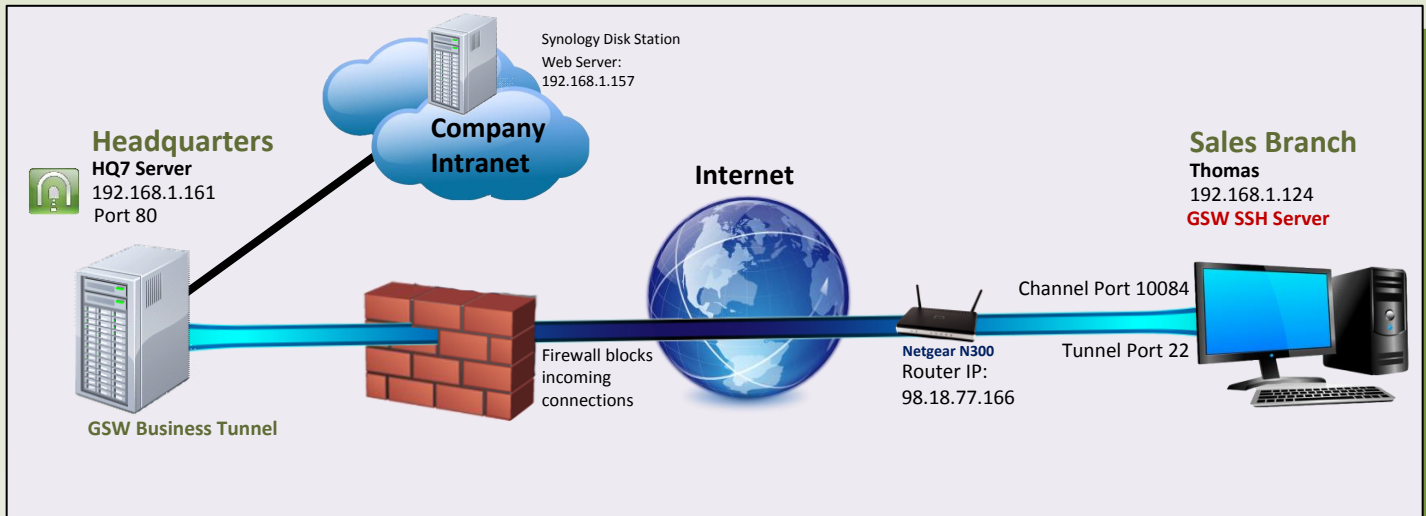
1. Select Remote forwarding type.
2. Set the loopback address (127.0.0.1) as the local address since the web server is on the same computer as the Business Tunnel.
3. Choose port number 80 for the local port.
4. Fill in the remote address as the loopback address (127.0.0.1)
5. Choose available port number to assign for remote port. We selected 10082.



GSW Business Tunnel

Example R02

Browse the Company Intranet from Sales Branch – Single User



CASE: Browse Company Intranet from Sales Branch

Your company Headquarters (HQ) does not allow incoming connections. You can set up a tunnel from HQ so an employee can browse the company intranet from a new sales branch on the server (Thomas). The GSW Business Tunnel is on HQ7, a different computer than the web server(Synology Disk Station).

NetGear N300 Router – Port Forwarding Configuration

Your router may need to be configured to port forward to the computer at the sales branch, Thomas.

#	Service Name	External Start Port	External End Port	Internal Start Port	Internal End Port	Internal IP address
1	GSW SSH	22	22	22	22	192.168.1.124

HQ7 – GSW Business Tunnel Configuration

Tunnel Settings

☒ Enable this tunnel:

SSH Host info

Name: Browse Company HQ Intranet 2 from Laptop
Host: 98.18.77.166
Host fingerprint 1:
Host fingerprint 2:
Port: 22

Authentication

Login: administrator
Use public key: ☐
Password: *****
Re-enter Password: *****
Import private key ... ☐ Private key imported:
Key type:
Key length: 10
Key fingerprint:

More details

Compression level: 6
Protocol: SSH2 only
Allow IPv6: ☐
Encryption algorithm: AES-256
Use proxy: ☐ Configure proxy ...

Cancel OK

SSH Host and Authentication Settings

1. Set Address of SSH Server Host. In this case, the router is forwarded to the SSH Server Host, so we use the router IP Address
2. Set Authentication Requirements. In this case, Authentication consisted of: Logon name and a password.

Thomas – GSW SSH Server Configuration

Make sure remote port forwarding is enabled on the SSH Server. With the GSW SSH Server, the setting is in the registry, as shown below.

x64 system:

HKEY_LOCAL_MACHINE\SOFTWARE\Wow6432Node\Georgia SoftWorks\GSW_SSHD\Parameters

x86 system:

HKEY_LOCAL_MACHINE\SOFTWARE\Georgia SoftWorks\GSW_SSHD\Parameters

Georgia SoftWorks	(Default)	REG_SZ	(value not set)
Georgia SoftWorks SSH Shield	bAES256Only	REG_DWORD	0x00000001 (1)
Georgia SoftWorks SSH Tunnel	bEnableLocalPortForwarding	REG_DWORD	0x00000001 (1)
GSW_SSHD	bEnableRemotePortForwarding...	REG_DWORD	0x00000001 (1)
Parameters	bEnableRemotePortForwarding...	REG_DWORD	0x00000001 (1)

Thomas – Browser Configuration

1. Open browser and enter URL <http://127.0.0.1:10084/> (from the channel configuration) and browse the company intranet



HQ7 – Channel Configuration

Channel Settings

☒ Enable this channel:

Name: Laptop Channel to Company 2
Forwarding type: Remote
Local address: 192.168.1.157
Local port: 80
Remote address: 127.0.0.1
Remote port: 10084

Cancel OK

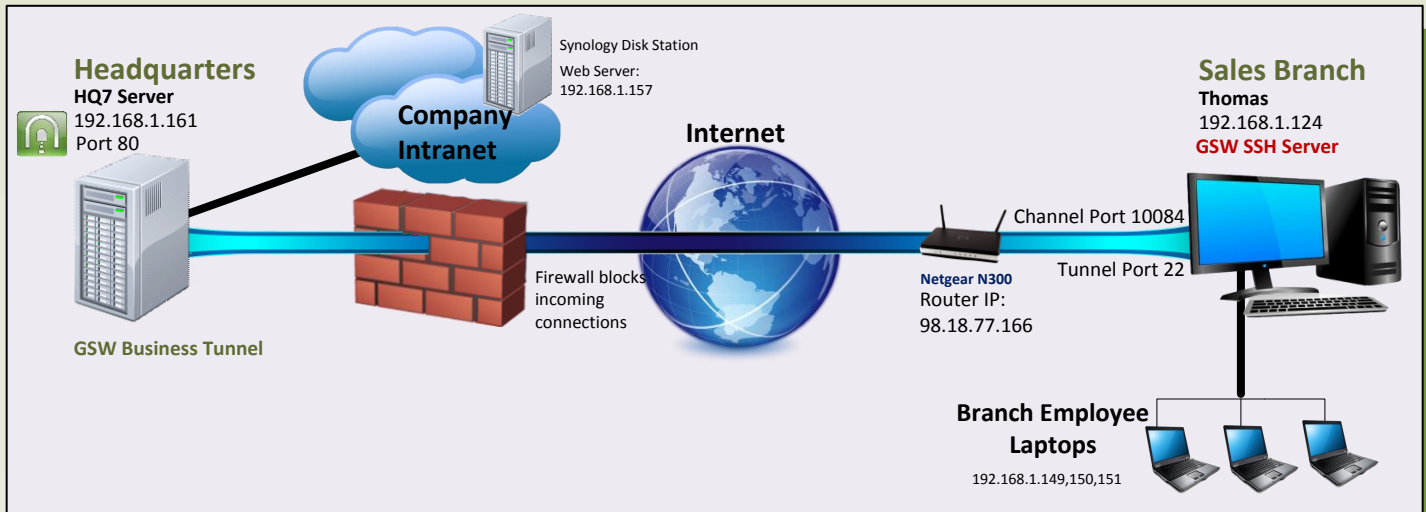
1. Select Remote forwarding type.
2. Set the address of the web server (192.168.1.157) as the local address.
3. Choose port number to assign for local port. We selected 80.
4. Fill in the remote address with the loopback address and available port number. We chose 10084.



GSW Business Tunnel

Example R03

Browse the Company Intranet from Sales Branch – Multiple Users



CASE: *Browse Company Intranet from Sales Branch 2*

Your company Headquarters does not allow incoming connections. You can set up a tunnel from work (HQ7) so multiple employees can browse the company intranet from a new sales branch. The GSW Business Tunnel is on HQ7, a different computer than the web server(Synology Disk Station).

NetGear N300 Router – Port Forwarding Configuration

Your router may need to be configured to port forward to the computer at the sales branch, Thomas.

#	Service Name	External Start Port	External End Port	Internal Start Port	Internal End Port	Internal IP address
1	GSW SSH	22	22	22	22	192.168.1.124

HQ7 – GSW Business Tunnel Configuration

SSH Host and Authentication Settings

1. Set Address of SSH Server Host. In this case, the router is forwarded to the SSH Server Host, so we use the router IP Address
2. Set Authentication Requirements. In this case, Authentication consisted of: Logon name and a password.

Thomas – GSW SSH Server Configuration

Make sure remote port forwarding is enabled on the SSH Server. With the GSW SSH Server, the setting is in the registry, as shown below.

x64 system:

HKEY_LOCAL_MACHINE\SOFTWARE\Wow6432Node\Georgia SoftWorks\GSW_SSHD\Parameters

x86 system:

HKEY_LOCAL_MACHINE\SOFTWARE\Georgia SoftWorks\GSW_SSHD\Parameters

Georgia SoftWorks	(Default)	REG_SZ	(value not set)
Georgia SoftWorks\SSH Shield	bAES256Only	REG_DWORD	0x00000001 (1)
Georgia SoftWorks\SSH Tunnel	bEnableLocalPortForwarding	REG_DWORD	0x00000001 (1)
GSW_SSHD	bEnableRemotePortForwarding	REG_DWORD	0x00000001 (1)
Parameters	bEnableWildcard	REG_DWORD	0x00000000 (0)

HQ7 – Channel Configuration

1. Select Remote forwarding type.
2. Set the address of the web server (192.168.1.157) as the local address.
3. Choose port number 80 for the local port.
4. Fill in the remote address with 192.168.1.124, the address of the SSH Server.
5. Choose available port number for the remote port. We chose 10084.

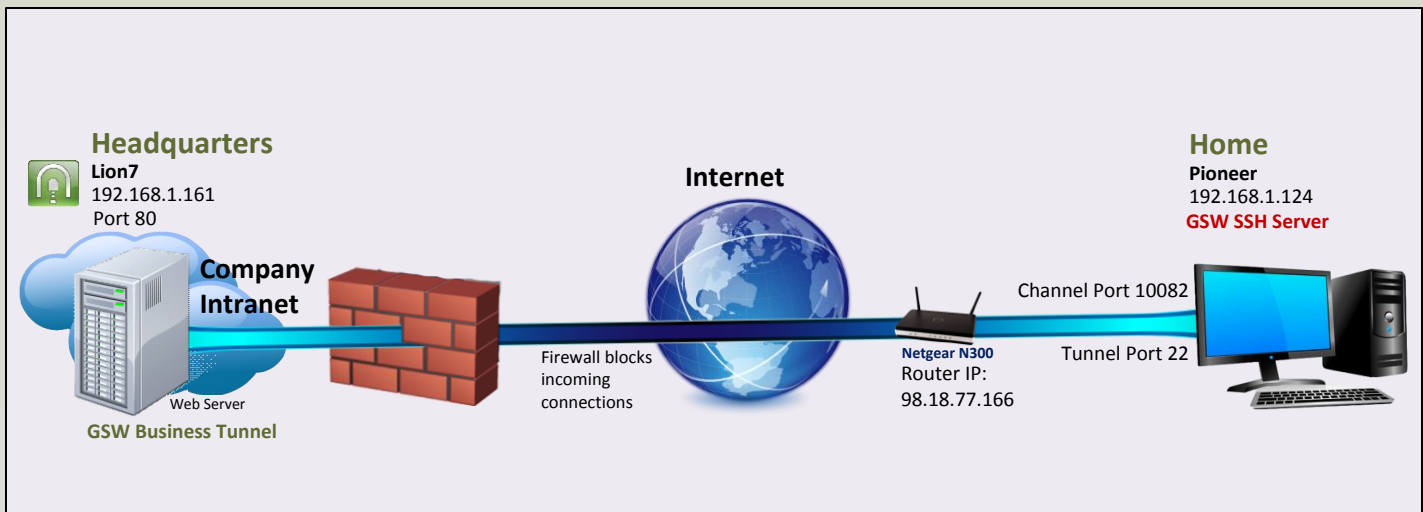
Thomas – GSW SSH Server Configuration

From Thomas or other computers on the sales branch network, open browser and enter the URL
<http://192.168.1.124:10084/>
(from the channel configuration)





Browse the Company Intranet from Home



CASE: *Browse Company Intranet from Home*

Your company Headquarters does not allow incoming connections. You can set up a tunnel from work (HQ) so you can browse the company intranet from home. The GSW SSH Server and Web Server are on the same computer.

NetGear N300 Router – Port Forwarding Configuration

Your router will need to be configured to port forward to the SSH Server

#	Service Name	External Start Port	External End Port	Internal Start Port	Internal End Port	Internal IP address
1	GSW SSH	22	22	22	22	192.168.1.124

Lion7 – GSW Business Tunnel Configuration

SSH Host and Authentication Settings

1. Set Address of SSH Server Host. In this case, the router is forwarded to the SSH Server Host, so we use the router IP Address
2. Set Authentication Requirements. In this case, Authentication consisted of: Logon name and a password.

Lion7 – GSW SSH Server Configuration

Make sure remote port forwarding is enabled on the SSH Server. With the GSW SSH Server, the setting is in the registry, as shown below.

x64 system:

HKEY_LOCAL_MACHINE\SOFTWARE\Wow6432Node\Georgia SoftWorks\GSW_SSHD\Parameters

x86 system:

HKEY_LOCAL_MACHINE\SOFTWARE\Georgia SoftWorks\GSW_SSHD\Parameters

Georgia SoftWorks	(Default)	REG_SZ	(value not set)
Georgia SoftWorks: SSH Shield	bAES256Only	REG_DWORD	0x00000001 (1)
Georgia SoftWorks: SSH Tunnel	bEnableLocalPortForwarding	REG_DWORD	0x00000001 (1)
GSW_SSHD	bEnableRemotePortForwarding	REG_DWORD	0x00000001 (1)
Parameters			

Pioneer – Browser Configuration



1. Open browser and enter URL <http://127.0.0.1:10082/> and browse the company intranet



Lion7 – Channel Configuration

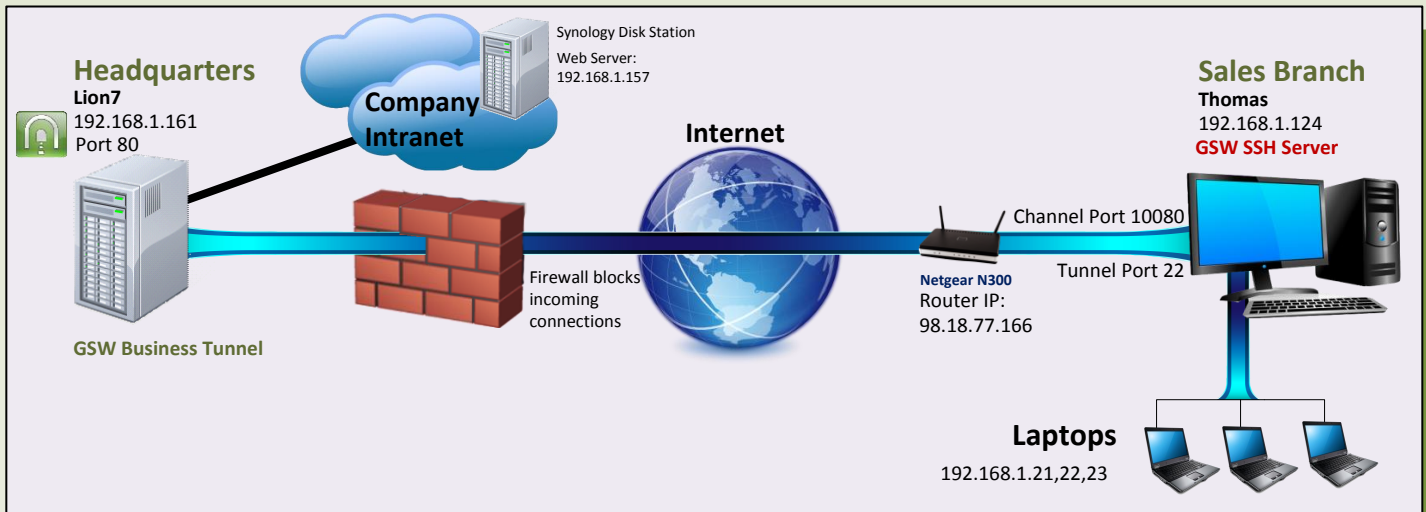
1. Select Remote forwarding type.
2. Set the loopback address (127.0.0.1) as the local address.
3. Choose 80 for the local port.
4. Set loopback address as the remote address.
5. Choose available port for the remote port (10082).



GSW Business Tunnel

Example R05

Browse the Company Intranet from Sales Branch using address 0.0.0.0



CASE: Browse Company Intranet from Sales Branch

Your company Headquarters does not allow incoming connections. You can set up a tunnel from work Headquarters so multiple employees can browse the company intranet from a new sales branch. The GSW Business Tunnel is on a different computer than the web server.

NetGear N300 Router – Port Forwarding Configuration

Your router may need to be configured to port forward to the computer at the sales branch, Thomas.

#	Service Name	External Start Port	External End Port	Internal Start Port	Internal End Port	Internal IP address
1	GSW SSH	22	22	22	22	192.168.1.124

Lion7 – GSW Business Tunnel Configuration

SSH Host and Authentication Settings

1. Set Address of SSH Server Host. In this case, the router is forwarded to the SSH Server Host, so we use the router IP Address
2. Set Authentication Requirements. In this case, Authentication consisted of: Logon name and a password.

Thomas – GSW SSH Server Configuration

Make sure remote port forwarding is enabled on the SSH Server. With the GSW SSH Server, the setting is in the registry, as shown below.

x64 system:

HKEY_LOCAL_MACHINE\SOFTWARE\Wow6432Node\Georgia SoftWorks\GSW_SSHD\Parameters

x86 system:

HKEY_LOCAL_MACHINE\SOFTWARE\Georgia SoftWorks\GSW_SSHD\Parameters

Georgia SoftWorks	(Default)	REG_SZ	(value not set)
Georgia SoftWorks SSH Shield	bAES256Only	REG_DWORD	0x00000001 (1)
Georgia SoftWorks SSH Tunnel	bEnableLocalPortForwarding	REG_DWORD	0x00000001 (1)
GSW_SSHD	bEnableRemotePortForwarding	REG_DWORD	0x00000001 (1)
Parameters	bEnableWinRM	REG_DWORD	0x00000000 (0)

Lion7 – Channel Configuration

1. Select Remote forwarding type.
2. Set the loopback address (127.0.0.1) as the local address.
3. Enter port 80 for the local port number.
4. Fill in the remote address with 0.0.0.0 which allows all computers on the network at the branch office to tunnel to Headquarters.
5. Choose available port for the remote port (10080)

Thomas – GSW SSH Server Configuration



From the Sales Branch Laptops, or any other computer on the network, open browser and enter the URL <http://192.168.1.124:10080/>

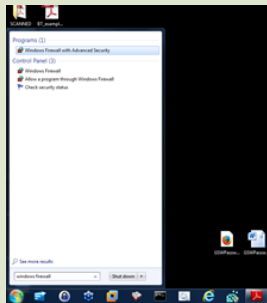


How to Configure Windows Firewall to Allow Access to an SSH Server

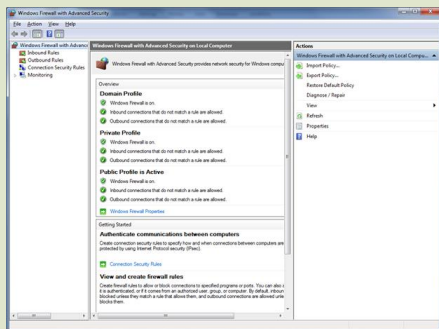
CASE: Open a Closed Port

Your home computer is running an SSH Server on port 22. You find port 22 closed to incoming connections. You need to open port 22 to allow GSW_SSHD.exe (GSW Business Tunnel) through the firewall. Configure the Windows Firewall to allow this executable to connect to your home computer.

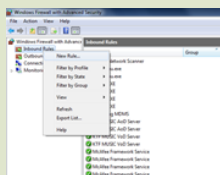
1. From the Start Orb, type *Windows Firewall* <enter>



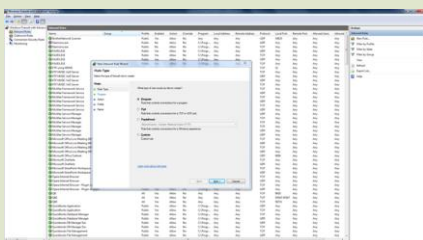
2. Select *Windows Firewall with Advanced Security Options*



3. Click on *Inbound Rules* and then *Right-Click*

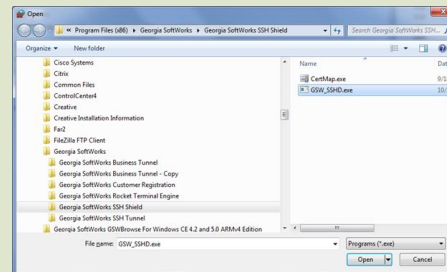


4. Select *New Rule* and *New Inbound Rule Wizard* opens. Select *Program* and click *Next*.



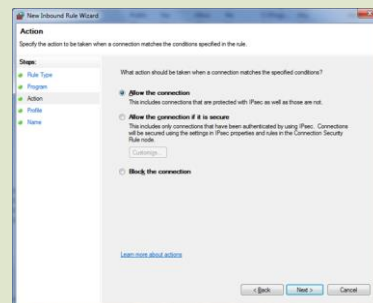
5. Select *This program path:* and click *Browse*

6. Navigate to the *GSW_SSHD.exe* file. (Example: "C:\Program Files\Georgia SoftWorks\Georgia SoftWorks SSH Shield\GSW_SSHD.exe") Select filename *GSW_SSHD.exe* and click *Open*.

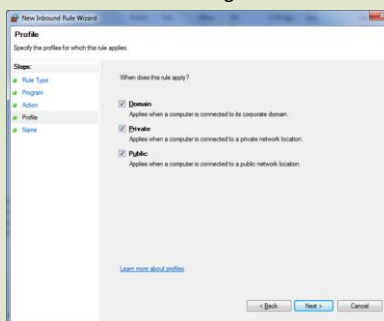


7. Click *NEXT*

8. Select *Allow the connection* and click *Next*



9. Leave the default settings and click *Next*



10. In the *Name* field, type *SSH* and click *Finish*

