



## Registration

The GSW Directed Terminal I/O Engine is licensed for a single server. The license must be *activated* for the software to operate. To activate the license a valid *Serial Number* is required and is examined periodically by the Directed Terminal I/O Engine software. The Serial Number also allows new versions to be downloaded and installed for the duration of your subscription plan.

Two methods exist to obtain a valid Serial Number.

1. Registration via Floating License (default method)  
The Serial Number is pre-programmed into a specific hardware key that came with your purchase. The hardware key connects to a parallel or USB port on the server. See page 1 for details on registration via the Floating License.
2. Registration via Software Serial Number.  
This method exists for environments that do not support parallel or USB ports. In brief this entails providing GSW with a machine specific Product ID. A Serial Number is generated based on the Product ID. This is usually performed via email, fax or telephone.

### Floating License – Overview

The Georgia SoftWorks Floating License provides the flexibility to rapidly move the GSW DTIO from one machine to another. *If you are unable to use the Floating License - skip this section and go to the section on Registration via Software Serial Number on page 8.*

**NOTE:** When a Directed Terminal IO Pack is purchased (Directed Terminal I/O Engine and GSW Telnet Server), the same physical Floating License will contain a valid Serial Number for both products.

With the Floating License **NO** software registration is required for the DTIO to operate.

Common scenarios where the Floating License is useful include:

- **Laboratory usage in a development or test environment** where the DTIO is required for short periods of time on any particular machine and then moved to a new machine.



- **Backup Servers in a production environment.** Typically multiple RF DTIOs are purchased for backup systems, however with a Floating License the Hardware Key can be quickly moved from the primary machine to the backup without any other registration requirements.
- **Environments where a failed server must be replaced or rebuilt and immediately restored to operation with full DTIO capability.**

The Georgia SoftWorks floating license is a hardware key that can be ordered for a USB Port or a Parallel port.




Parallel Port Floating License	USB Floating License
 <p>Figure 1: Floating License – Parallel Port</p> <p>The Parallel Port Floating License is a Pass Through allowing normal function of the port.</p>	 <p>Figure 2: Floating License - USB Port</p> <p>Not attached to a Server</p>
<p>The Parallel Port Floating License connects to a female parallel port on the server and does not impact functionality of the port for other uses. It acts as a pass through allowing normal connections to the other side of the key.</p>	 <p>USB LED Lights when Installed</p>

Table 1: Floating Licenses - USB and Parallel

GSW RF DTIO will recognize the presence of the key and activate the software and the proper date for which free version upgrades can be obtained. It does not matter which parallel or USB port on the server the Hardware Key is installed, as all ports will be scanned for the installation of the key.

The Floating License currently is installed using the manufacturer (Aladdin) of the hardware key's setup program. It is described below. The name of the hardware key is HASPHL and you will see it displayed in the setup screens



## Floating License – Hardware Key Installation Instructions

**Note:** If you are using a *USB Floating License on a Windows NT system* run the file `aksnt4usb.exe` prior to the following steps.

1. Install the GSW DTIO software as described on page **Error! Bookmark not defined.** (if it is not already installed).
2. Copy the files from the Floating License folder (hardkey) on the provided CD to the hard drive on your server.
3. Run the `HASPUserSetup.exe` program and follow the installation instructions.

You will first see the Aladdin Splash Screen. The Aladdin Splash Screen will display for about 5 seconds.

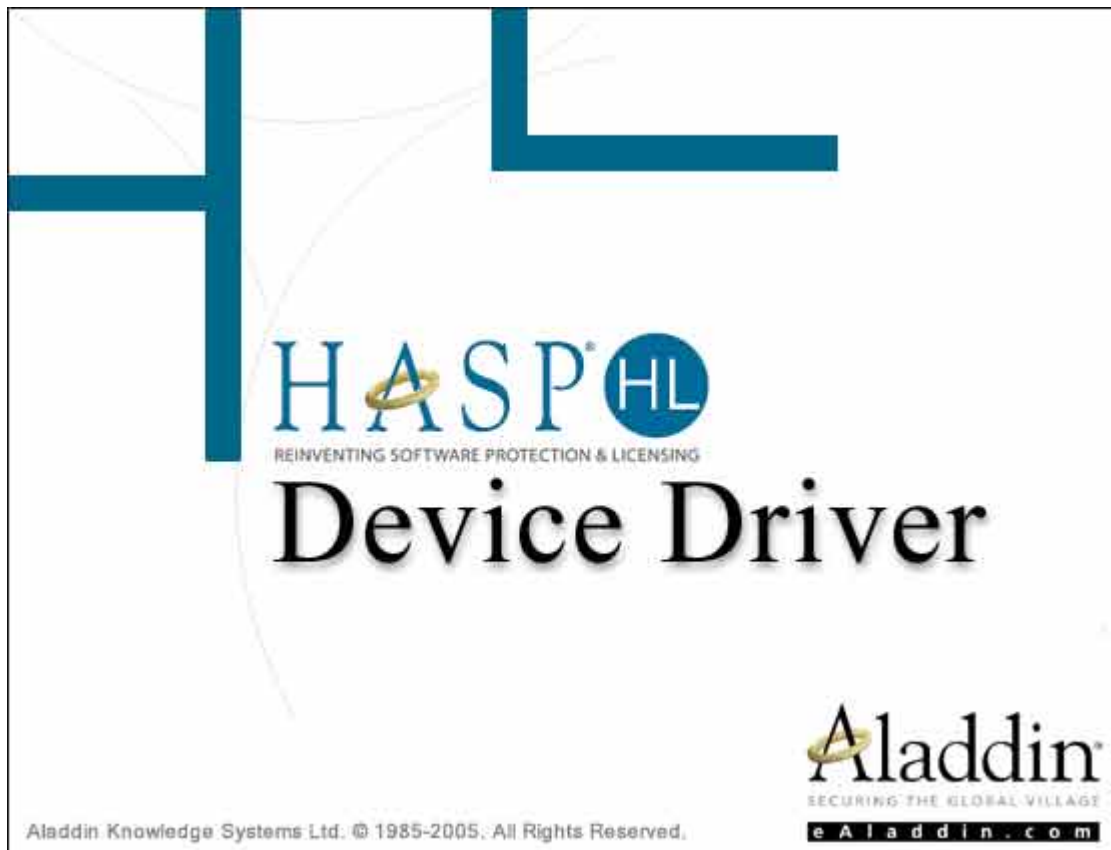


Figure 3: Floating License – HW Key Initial Splash Screen



4. The next screen displayed is the Aladdin Welcome Screen.

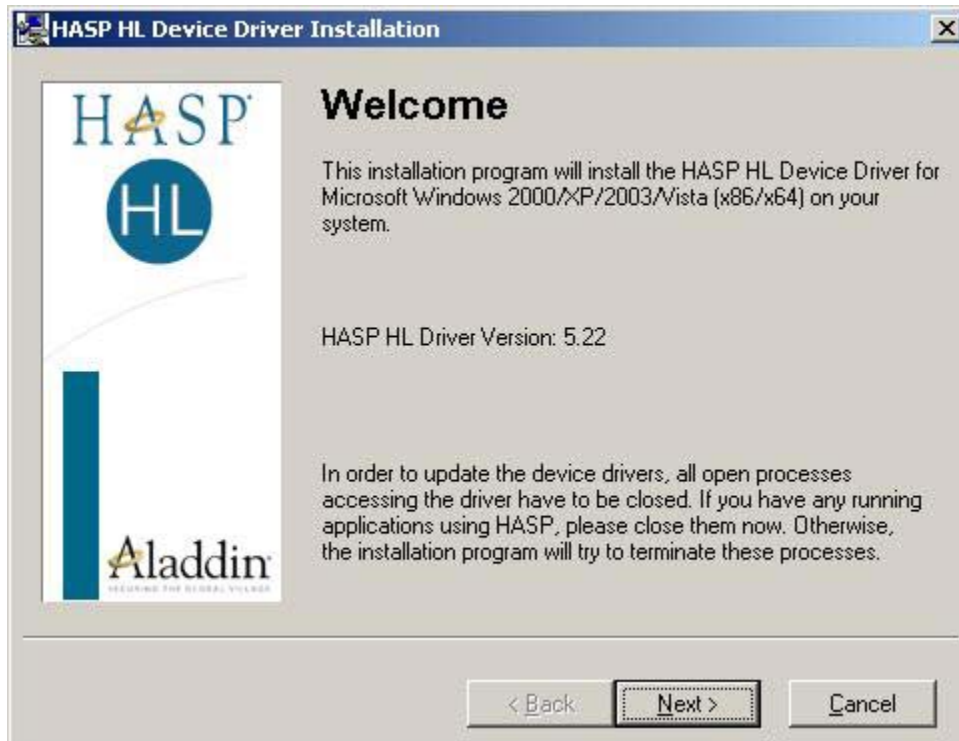


Figure 4: Floating License – Welcome Screen

As the dialog indicates, if you have any running application please close them now. **Click Next.**

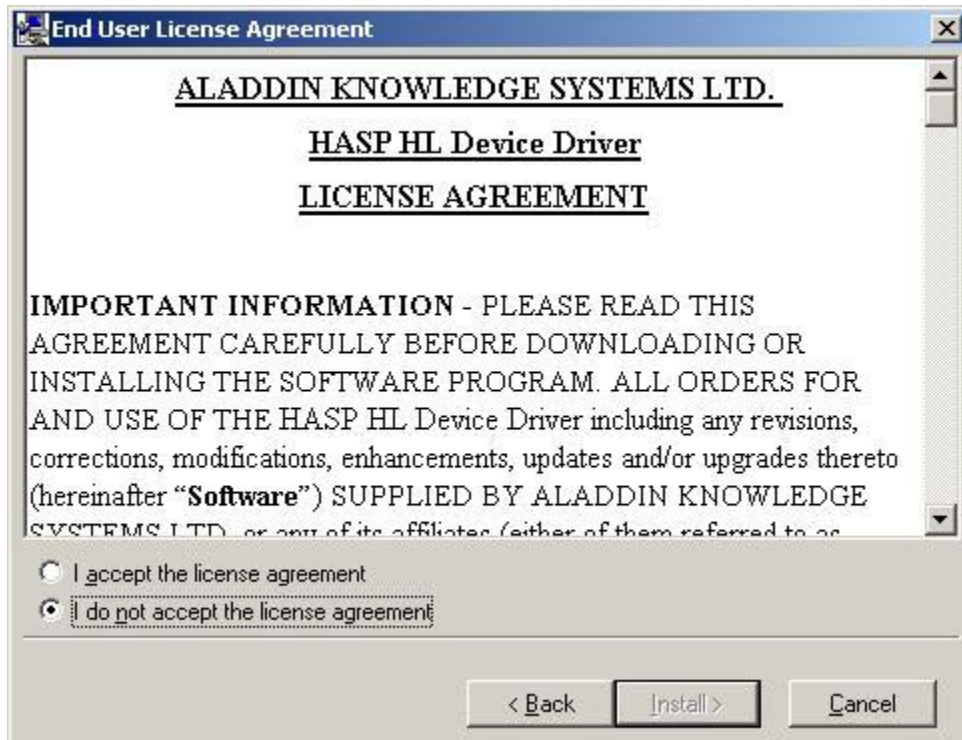


Figure 5: Floating License - License Agreement

Read the license agreement and select "I accept the license agreement", and then **Click Install**.

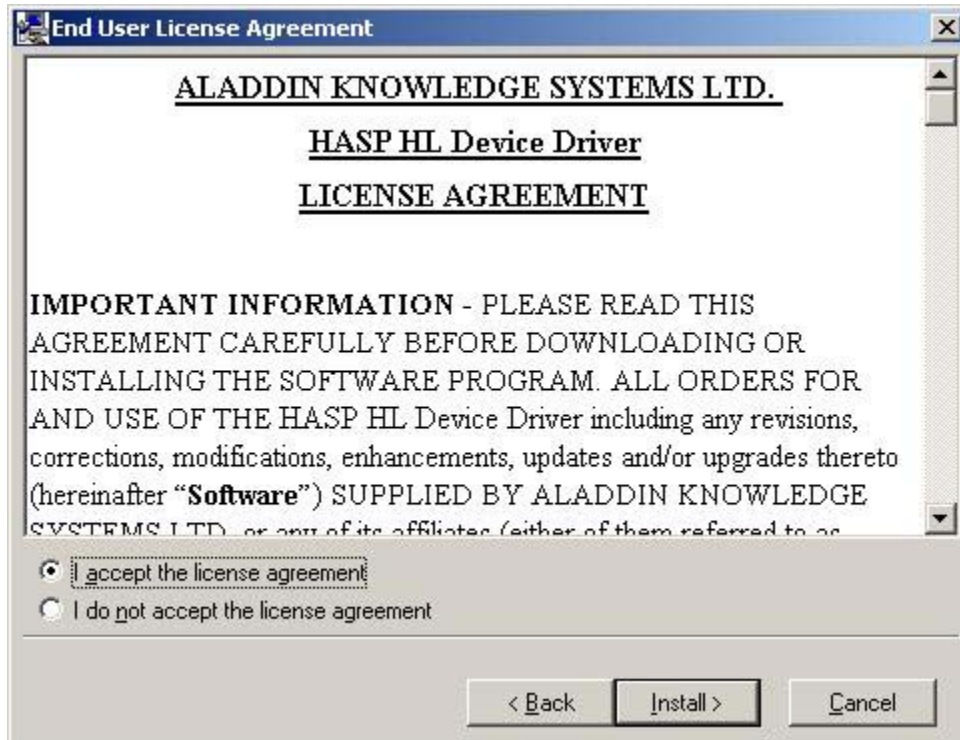


Figure 6: Floating License - Accept License Agreement

5. An installation status progress meter is quickly displayed and when the status gathered is completed the screen below is displayed.



Figure 7: Floating License - HW Key - Installation Status





- When the installation of the Aladdin Hasp Device driver is complete the screen below is displayed. **Click Finish.**

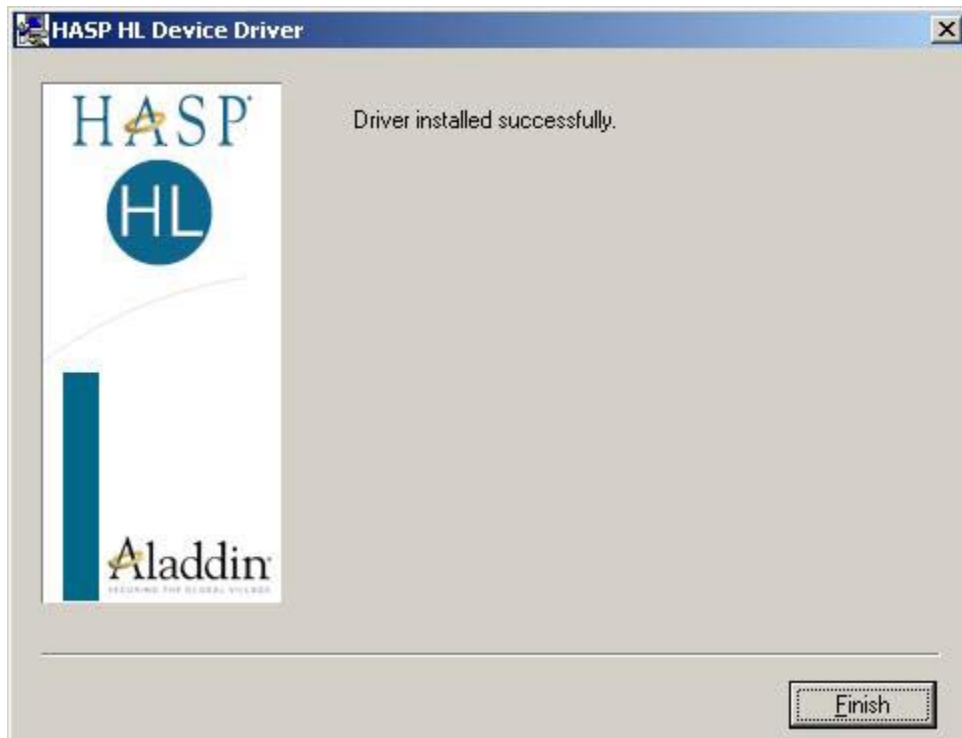


Figure 8: Floating License Drivers Successful Installation

- Plug the hardware key onto the parallel or USB port on the server.

NOTE: On some systems you may have to reboot the server after installation. If the Floating License is not recognized (by the GSW DTIO) after installing the driver, please reboot the server.



Uninstall Floating License - (Hardware Key)

In the event that you need to uninstall the Floating License (Aladdin HaspHL) please use the Windows Control Panel Add/Remove Programs administrative utilities.

**NOTE: Removing or uninstalling the Floating License will disable the GSW DTIO Software.**

### Registration via Software Serial Number

To run the GSW Directed Terminal I/O Engine you must first register the software. (*This registration is NOT required if you installed the Floating License. Page 1*) Registration via Software Serial Number entails just a few steps that involve obtaining the Product ID and providing this Identification to Georgia SoftWorks so a Serial Number can be generated. - **NOTE:** Read System Signature chapter at the end of manual.

How to Register the Software

To run the registration software -

- Select the *Start* button on the task bar; select *Programs*, then *Georgia SoftWorks Directed Terminal I/O Engine* and then *Registration*.

**Note:** The Product Information *Name* and *Version* must contain valid data or it will not generate a correct Product ID.

The registration screen is displayed. The Registration software automatically fills in the Product Information fields as shown in the figure below.





GSW Registration Tool Ver. 1.27.00.0007 - samson

<b>Customer information</b> Name: <input type="text"/> Company: <input type="text"/> Street Address1: <input type="text"/> Street Address2: <input type="text"/> City: <input type="text"/> State: <input type="text"/> Zip: <input type="text"/> Country: <input type="text"/> Phone: <input type="text"/> Fax: <input type="text"/> Purchased From: <input type="text"/> Application software: <input type="text"/>	<b>Product information</b> Name: <input type="text" value="GSW_DTIO"/> <input type="text"/> Version: <input type="text" value="1.01"/> Zone: <input type="text" value="x25qWa0W"/> Product ID: <input type="text" value="3CF4AF6F630AD0BB4E77002BCB4F469C11D0CA170CB0"/>	<b>Registration information</b> Please enter your serial number in the window below and click on the 'Register' button <input type="text"/> Expiration date: <input type="text" value="Not set"/> Free updates until: <input type="text" value="Not set"/> Parameter: <input type="text"/> <input type="button" value="Register"/>
--	--	---

Save to file... Print... Hw Key... Close

Figure 9: Registration with Serial Number - Initial Screen



1. Please complete the *Customer Information*, the *Purchased From* and the *Application Software* fields in the Registration Screen. The *Purchased From* and the *Application software* fields are very important when requesting support. In our example below it indicates that the GSW RF DTIO was obtained directly from Georgia SoftWorks and the application that the GSW RF DTIO is being used with is the Barcode and Scan software package.

 The screenshot shows a window titled "GSW Registration Tool Ver. 1.27.00.0007 - samson". It is divided into three main sections:
 

- Customer information:** Name: John Doe, Company: ACME WIDGET COMPANY, Street Address1: 1000 Technology Way, Street Address2: PO Box 8921, City: Atlanta, State: GA, Zip: 30401, Country: USA, Phone: 706-265-1018, Fax: 706-265-1020, Purchased From: Georgia SoftWorks, Application software: Barcode and Scan.
- Product information:** Name: GSW\_DTIO, Version: 1.01, Zone: x25qWa0W, Product ID: 3CF4AF6F630AD0BB4E77002BCB4F469C11D0CA170CB0.
- Registration information:** A text box for a serial number, Expiration date: Not set, Free updates until: Not set, and a Parameter field.

 At the bottom, there are buttons for "Save to file...", "Print...", "Hw Key...", "Close", and "Register".

Figure 10: Registration - User Information

2. The registration information must be provided to Georgia SoftWorks to obtain the Serial Number. Several methods are available for your convenience.
  - a. Save the information to a file and email it to Georgia SoftWorks - *Preferred method*. Please save (using the **Save to file** button on the registration screen) this information to a file and email to Georgia SoftWorks [registration@georgiasoftworks.com](mailto:registration@georgiasoftworks.com)
  - OR**
  - b. Print the information and Fax it to Georgia SoftWorks. Please print (using the **Print** button on the registration screen) this information and fax to Georgia SoftWorks - 706.265.1020



OR

- c. Call GSW at 706-265-1018 to obtain verbal registration.

Once Georgia SoftWorks receives the information, we can generate a Serial Number on demand. We will reply back via Fax or email. You may close the registration program at this time.

3. When the Serial Number is provided Run the Registration Program again and enter the Serial Number. The easiest method to get the serial number is to highlight the returned Serial Number and copy (ctrl-c). Then position the mouse in the Serial Number field in the Registration Information box and paste (ctrl-v).

The screenshot shows a window titled 'GSW Registration Tool Ver. 1.27.00.0007 - samson'. It is divided into two main sections: 'Customer information' and 'Product information'. The 'Customer information' section includes fields for Name (John Doe), Company (ACME WIDGET COMPANY), Street Address1 (1000 Technology Way), Street Address2 (PO Box 8921), City (Atlanta), State (GA), Zip (30401), Country (USA), Phone (706-265-1018), Fax (706-265-1020), Purchased From (Georgia SoftWorks), and Application software (Barcode and Scan). The 'Product information' section includes Name (GSW\_DTIO), a quantity field (200), Version (1.01), and Zone (x25qWa0W). Below this is a 'Registration information' section with a text area containing a long alphanumeric string (D25EEAF8BF0C9EF0089A5CE15107C850A584632C25D8), fields for Expiration date (Not set) and Free updates until (Not set), a Parameter field, and a 'Register' button. At the bottom of the window are buttons for 'Save to file...', 'Print...', 'Hw Key...', and 'Close'.

Figure 11: Registration - Serial Number Applied



4. Click Register.



Figure 12: Registration Successful Screen

Now the software is registered. You may now run the Georgia SoftWorks Directed Terminal I/O Engine. Note that you will be able to obtain Free Updates until the date specified.

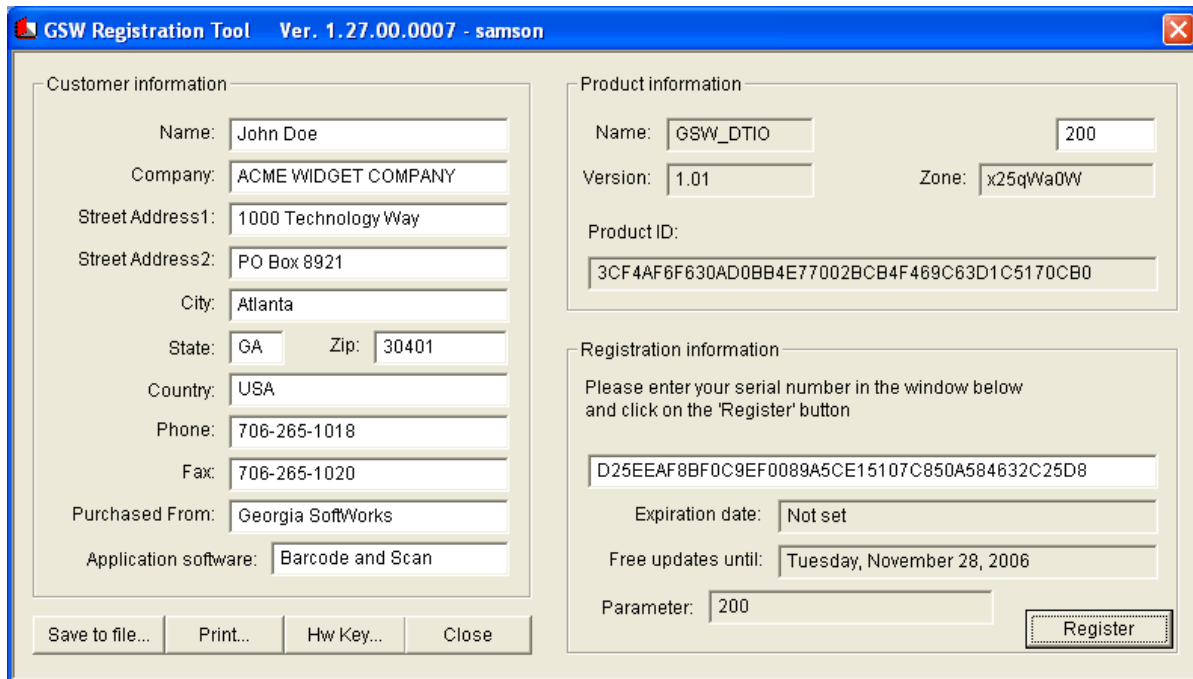


Figure 13: GSW DTIO is now registered

**IMPORTANT: READ SYSTEM SIGNATURE CHAPTER AT END OF MANUAL.**