



Registration

To run the Password Guard you must first register the software. This entails just a few steps that involve obtaining a signature of the NT System that the Password Guard is installed, providing this signature to Georgia SoftWorks, and obtaining a registration key.

To Register the Software.

From the Start button on the task bar, select *Programs*, then *Password Guard* and then *Registration*. The registration screen is displayed(Figure 1 - Registration Screen

A screenshot of a software registration window titled 'Georgia SoftWorks Product Registration'. The window is divided into three main sections: 'Customer information', 'Product information', and 'Registration information'.
- The 'Customer information' section contains input fields for Name, Company, Street Address 1, Street Address 2, City, State, Zip, Country, Phone, and Fax.
- The 'Product information' section contains input fields for Name (filled with 'PwdGuard'), Version (filled with '1.14'), and ID (filled with '2BD09C77523FEB904E77012E04663C54').
- The 'Registration information' section contains a text box with the instruction 'Please enter your serial number in the window below and click on the 'Register' button' and a 'Register' button.
At the bottom of the window are three buttons: 'Save to file...', 'Print...', and 'Close'.

1.).

Figure 1 - Registration Screen



The screenshot shows a dialog box titled 'Georgia SoftWorks Product Registration'. It is divided into three main sections: 'Customer information', 'Product information', and 'Registration information'.
 - **Customer information:** Contains empty text boxes for Name, Company, Street Address1, Street Address2, City, State, Zip, Country, Phone, and Fax.
 - **Product information:** Contains text boxes for Name (filled with 'PwdGuard'), Version (filled with '1.14'), and ID (filled with '2BD09C77523FEB904E77012E04663C54').
 - **Registration information:** Contains the instruction 'Please enter your serial number in the window below and click on the 'Register' button' and an empty text box for the serial number.
 At the bottom of the dialog box are three buttons: 'Save to file...', 'Print...', and 'Close'. A 'Register' button is located at the bottom right of the 'Registration information' section.

The Registration program will determine the product and the version and compute the system signature. Complete the registration information(Figure 2 - Registration: Customer Information)

This screenshot shows the same 'Georgia SoftWorks Product Registration' dialog box, but with the 'Customer information' section filled out.
 - **Customer information:** Name: Jane Doe; Company: ACME WIDGETS; Street Address1: MAIN STREET; Street Address2: (empty); City: ComputerTown; State: NY; Zip: 30201; Country: USA; Phone: 305.123.4567; Fax: 305.123.4568.
 - **Product information:** Same as the previous screenshot.
 - **Registration information:** Same as the previous screenshot.
 The buttons at the bottom ('Save to file...', 'Print...', 'Close', and 'Register') are also present.



2.). The registration information must be provided to Georgia SoftWorks to obtain the registration key. Several methods are available for your convenience.
 - a. Print the information and Fax it to Georgia SoftWorks
 - b. Save the information to a file and email it to Georgia SoftWorks

Figure 2 - Registration: Customer Information

A screenshot of a software dialog box titled "Georgia SoftWorks Product Registration". The dialog box is divided into three main sections: "Customer information", "Product information", and "Registration information".
The "Customer information" section contains the following fields:

- Name: Jane Doe
- Company: ACME WIDGETS
- Street Address1: MAIN STREET
- Street Address2: (empty)
- City: ComputerTown
- State: NY
- Zip: 30201
- Country: USA
- Phone: 305.123.4567
- Fax: 305.123.4568

The "Product information" section contains:

- Name: PwdGuard
- Version: 1.14
- ID: 2BD09C77523FEB904E77012E04663C54

The "Registration information" section contains the text: "Please enter your serial number in the window below and click on the 'Register' button". Below this text is an empty text input field. At the bottom right of this section is a "Register" button.
At the bottom of the dialog box, there are three buttons: "Save to file...", "Print...", and "Close".



3. Please print(using the **print** button on the registration screen) this information and fax to Georgia SoftWorks - 706.265.1020 or

Or

Please save(using the **save to file** button on the registration screen) this information to a file and email to Georgia SoftWorks - registration@georgiasoftworks.com

4. Once we receive the information, we can generate a registration key on demand. We will reply back via Fax or email. You may close the registration program at this time.



When the Registration Key is received run the registration program again and enter the key received from Georgia SoftWorks in the Registration Information field on the screen(Figure 3 - Registration Key Entered

A screenshot of a software registration dialog box titled 'Georgia SoftWorks Product Registration'. The dialog is divided into three main sections: 'Customer information', 'Product information', and 'Registration information'.
The 'Customer information' section contains the following fields:
Name: Jane Doe
Company: ACME WIDGETS
Street Address1: MAIN STREET
Street Address2: (empty)
City: ComputerTown
State: NY Zip: 30201
Country: USA
Phone: 305.123.4567
Fax: 305.123.4568
The 'Product information' section contains:
Name: PwdGuard
Version: 1.14
ID: 2BD09C77523FEB904E77012E04663C54
The 'Registration information' section contains the text: 'Please enter your serial number in the window below and click on the 'Register' button'. Below this text is a text box containing the serial number: C57AD9E08E39A5DB089A5DE49E2EB298. At the bottom right of this section is a 'Register' button.
At the bottom of the dialog box are three buttons: 'Save to file...', 'Print...', and 'Close'.

5.).

Figure 3 - Registration Key Entered

A screenshot of the 'Georgia SoftWorks Product Registration' dialog box. The dialog box has a teal title bar and is divided into three main sections: 'Customer information', 'Product information', and 'Registration information'.
The 'Customer information' section contains the following fields:

- Name: Jane Doe
- Company: ACME WIDGETS
- Street Address1: MAIN STREET
- Street Address2: (empty)
- City: ComputerTown
- State: NY
- Zip: 30201
- Country: USA
- Phone: 305.123.4567
- Fax: 305.123.4568

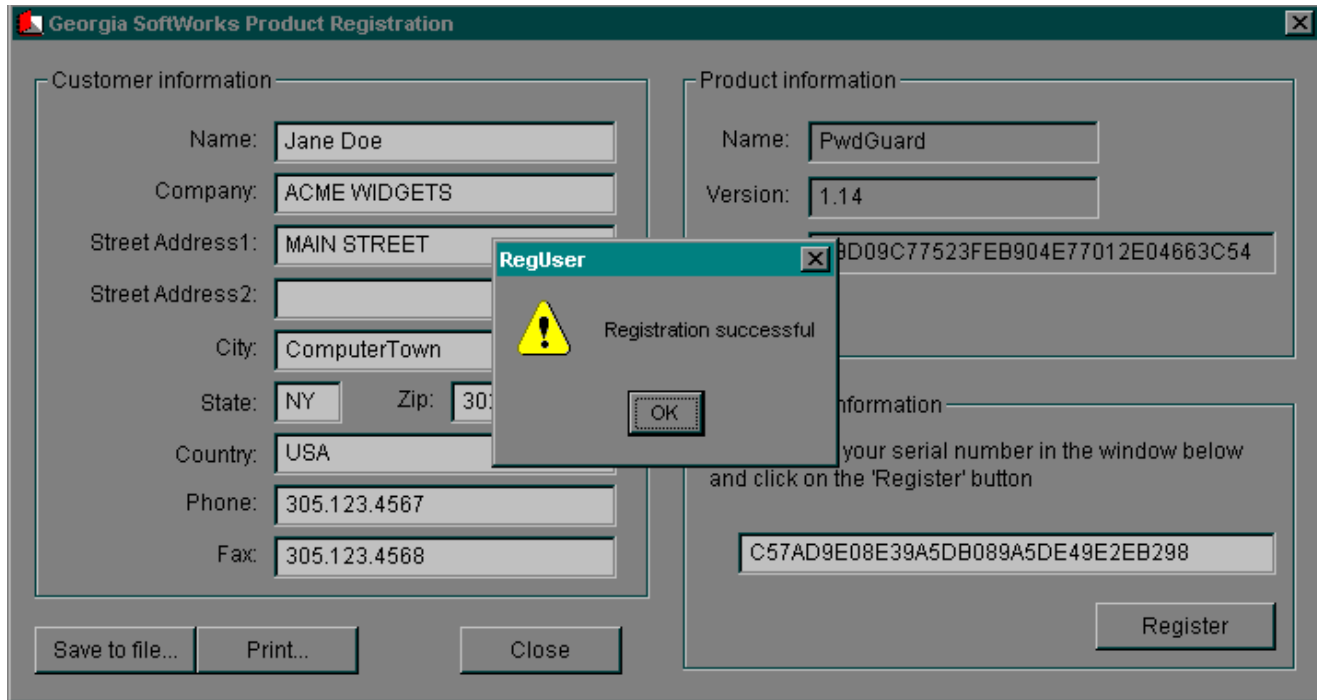
At the bottom of this section are three buttons: 'Save to file...', 'Print...', and 'Close'.
The 'Product information' section contains the following fields:

- Name: PwdGuard
- Version: 1.14
- ID: 2BD09C77523FEB904E77012E04663C54

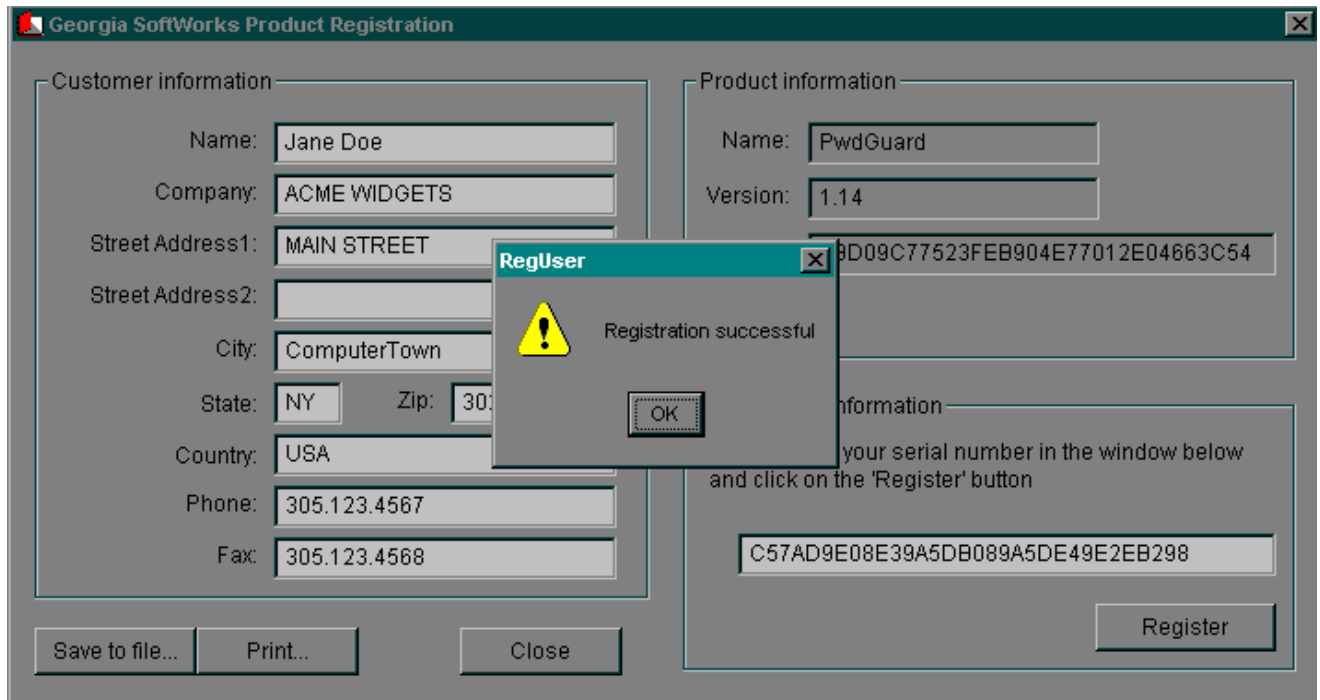
The 'Registration information' section contains the text: 'Please enter your serial number in the window below and click on the 'Register' button'. Below this text is a text box containing the serial number: C57AD9E08E39A5DB089A5DE49E2EB298. A 'Register' button is located at the bottom right of this section.

6. Click **Register**.

Figure 4 - Registration Successful



You will get the *Registration Successful* Dialog(Figure 4 - Registration Successful





7.). Click **OK**

Now the software is registered. You may now run the Password Guard.

NOTE: If the signature of the NT System is changed then a new registration key from Georgia SoftWorks must be obtained. Repeat the registration process.