



# Remote Control MDMS

## MonView Quick Overview

GSW RC Mobile Device Monitoring Suite (RcMDMS) is software that allows the remote control and viewing of the desktop of a mobile device.

**View Device Tab-** the main screen of GSW Mon-View.

**File Transfer Tab-** use this interface to transfer files to and from mobile devices and work station.

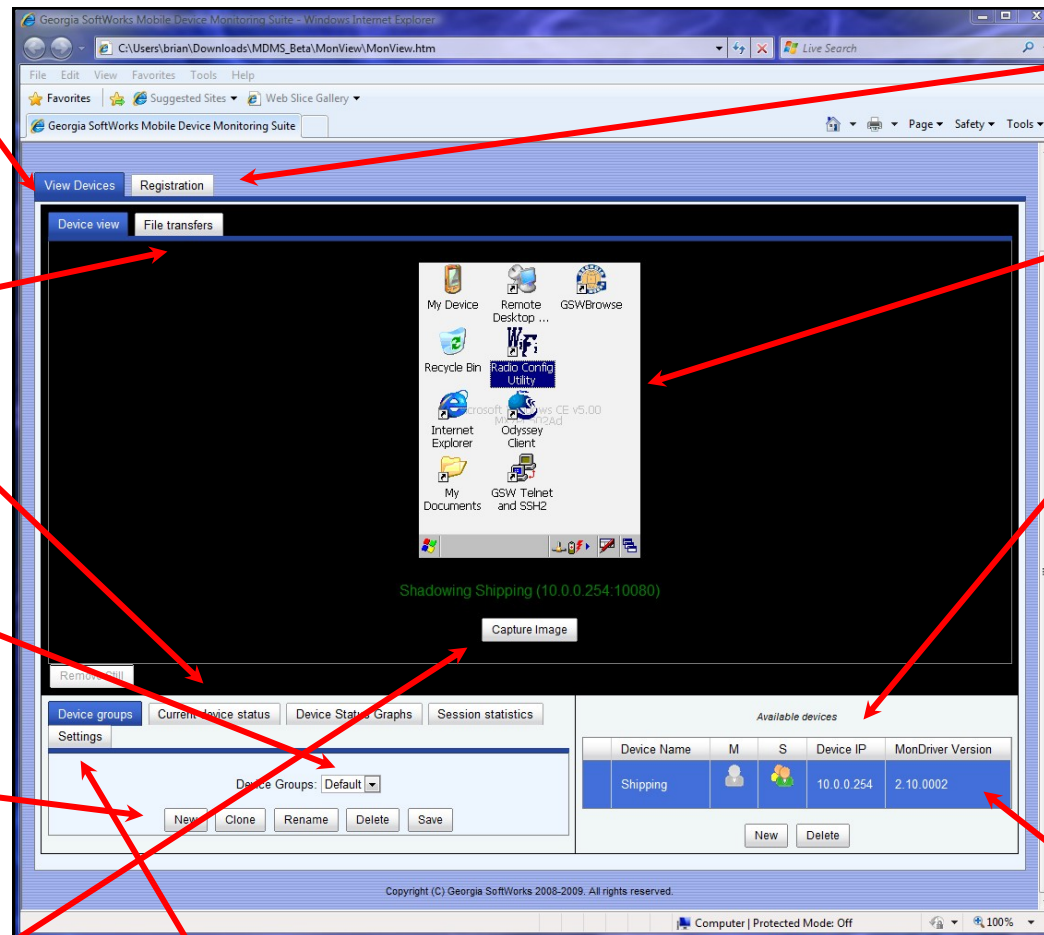
**Current Device Status -** Detailed status of CPU, Battery, Memory and Wi-Fi signal strength.

**Device Groups-**A drop-down box that lists different groups of devices to be displayed.

**Group Editing Buttons-** Add additional groups of devices, rename existing groups, clone or delete groups with this set of buttons.

**Capture Image-** Click here to capture the screen from the device that is showing in the device view area.

**Device List-**Shows the list of devices in the chosen Device Group. Also an area where device names and IP addresses are entered.



**Registration Tab-** This area is used to register the device after purchasing a license.

**Device View-**A real time image of the device that is being monitored displays in this area.

**Device Action Buttons-** Add new devices to a group or delete them. Click icon to begin or end monitoring the device that has been selected. A selected device is highlighted in blue.

**Settings-** Dynamically adjust MDMS based on device's CPU utilization.