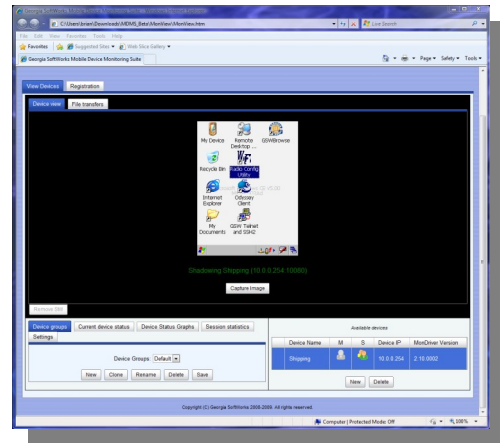




GSWMDMS Files

GSWMDMS.zip This zip file contains three folders, MonView, MonDriver and Doc. The contents of the GSWMDMS.zip should be extracted onto the workstation to the folder of your choice. Please make sure the option 'Use folder names' (if available) is checked for unzipping .

- The MonDriver folder contains self-extracting setup programs needed to install MonDriver from your workstation to mobile devices.
- The MonView folder contains the application files that run on the workstation to view the devices. To run MonView on your workstation launch GSWMon.htm as described below. (special launch instructions for Firefox.)



http://www.georgiasoftworks.com/downloads/gswmdms/quick_install.htm

Install MonDriver on Device

1. Using Windows Mobile Device Manager or ActiveSync connect the device to the workstation on which the MonDriver file resides.
2. Choose the appropriate executable file for your device.
3. Double Click on the appropriate MonDriver setup file that is located on the workstation.
4. Follow the install instructions on the workstation.



GSW MonDrivers

Self extracting files from device

Windows CE 4.2 / 5.0 +	
File Name	Device Manufacturers
GSWMLXE.exe	LXE
GSWMIM.exe	INTERMEC
GSWMST.exe	SYMBOL
GSWMPT.exe	PSION TEKLOGIX
Windows Mobile	
File Name	Device Manufacturers
GSWMONWM.exe	ALL Manufacturers

Install MonView on Workstation

1. Extract the zipped files into a folder on the workstation you will use to host the GSW MonView. The GSW MonView and devices must be in the same network.
2. To use **IE6, IE7 and IE8** Double Click on the MonView.htm file to open the monitoring file on the workstation. (Assumes IE is your default browser.)
3. To use **Firefox**, Open the browser, enter the URL as [file:///127.0.0.1/C:/path to file/GSWMon.htm](file:///127.0.0.1/C:/path%20to%20file/GSWMon.htm)

(Must us loopback IP in URL. Double Clicking MonView.htm to open FireFox will not work)







Quick Startup and Configuration

Mobile Device Setup

Once the appropriate GSW MonDriver has been installed on the device there is no other configuration to be performed on the device.

Workstation Setup

1. Unzip the GSW Mobile Device Monitoring Suite archive to a folder.
2. Open the MonView.htm file. A device named Dev1 will already exist.
3. Add the IP address of the device you want to monitor by double clicking in the box below the heading 'Device IP' of the default device (Dev1).
4. Click the  icon for remote control and the  icon for monitoring the mobile device.

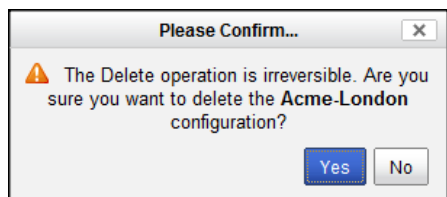
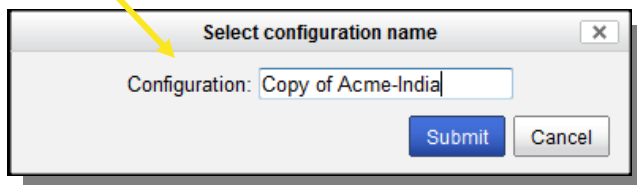
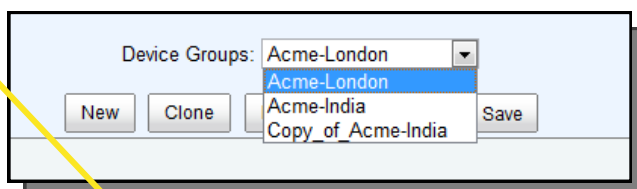
Configure GSW MonView Groups

Grouping devices together is a convenient feature that saves devices and their settings in easy to navigate Device Groups. Mobile devices can reside in more than one Device Group.

1. To create group Click NEW. (You are prompted for the new group name).
2. Type in the name of the group being created. Click [Submit].

Repeat steps 1-2 to add additional groups.

3. To select a group, use the drop-down box. (This will display the mobile devices in the Available Devices list).
4. Clone a group by selecting the group and clicking [Clone]. This is a convenient tool to quickly create groups from existing groups that have already been created.
5. To Rename a group, simply select the group and click [Rename], type a new name and Click [Submit].
6. Delete a group by selecting the group and clicking the [Delete] button.



Deleting Device Group must be confirmed before deletion can take place.