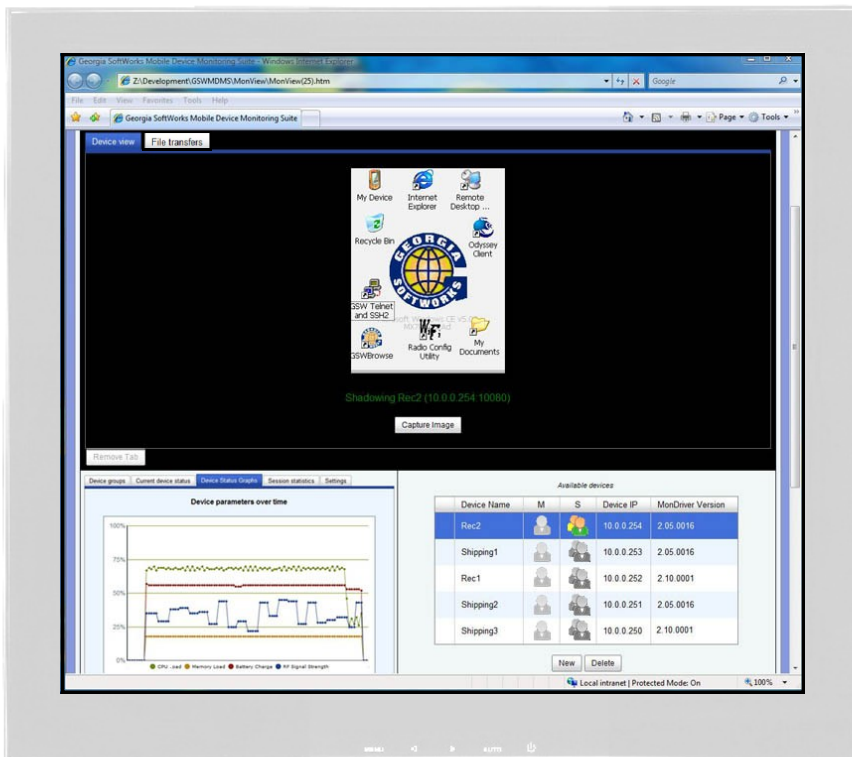


Remote Control MDMS

Mobile Device Monitoring Suite



Remote Control MDMS allows an Administrator to be in several places at once. Without leaving your office you can observe the work flow of a multitude of mobile devices.



Easily Transfer files between mobile devices and workstation through a web browser.

The Device Status features is gathering pertinent data from each mobile device in real time. The information gathered is then presented in several different formats to the administrator.

When a device configuration or software issue does occur, **RcMDMS** provides a steady and reliable remote control connection to the device allowing the Administrator from the convenience of his/her workstation to troubleshoot and remedy the issue.

RcMDMS Special Features

- Web based application that is optimized for virtually no impact to the end users mobile device.
- Transfer files between mobile devices and workstation.
- Reliable Remote Control of a mobile device from any workstation's keyboard and mouse.
- Robust Remote Control Shadow Mode enables data and configurations to be entered from a workstation.
- Stealth Monitoring Mode ensures mobile device observation without accidental interruptions.
- Monitor real-time device status such as Battery, CPU, Memory and RF signal.
- A unique screen capture feature that allows for multiple shots that can be saved at a later time.

Georgia SoftWorks
Tel. 706.265.1018
www.georgiasoftworks.com

Download a Free Trial Version www.georgiasoftworks.com/gsw_mdms/

Remote Control MDMS

Mobile Device Monitoring Suite



Features

Browser Base Application– A major benefit of the RcMDMS is that all of its features function 100% within a web browser. Using protocols over a TCP/IP network enables robust and industrial grade operations with very little overhead on the network and minimal impact to the End User's mobile device.

File Transfer– Use the RcMDMS web browser interface to transfer files between the mobile device and the workstation.

Remote Control Shadowing– With the RCShadowing feature you can take control of the device with a workstation's keyboard and mouse and monitor. By doing so, configuring settings, running programs and rebooting on the mobile device are done through a fast and minimal overhead to the network TCP/IP connection.

Monitoring– With this feature the Administrator can view any mobile device without the worry of compromising the work flow with any accidental remote control.

Device Status Graphing– Monitoring Device Status of four key indicators are displayed in real time through a flowing line graph. The indicators shown are CPU Usage, Battery Status, Memory Usage, and Wi-Fi Signal Strength. Additional aspects of each indicator is shown in a separate tab in a more detailed format.

Device Groupings– Create groups of mobile devices. These lists are convenient in accessing quickly numerous devices.

Screen Capture– Capture several mobile devices screen images in an instant. This unique method enables the recording of many screen shots one after another, sort though the images you need, and finally save them.

Georgia SoftWorks
17 Hwy 9 South
Dawsonville, GA. 30534
Tel. 706.265.1018
www.georgiasoftworks.com

One Button Registration

One Button Registration– If you have one or 100 mobile devices on your network, registration can be done in a few simple steps. With one click of a button on the workstation information is gathered from all of the mobile devices and create one registration file. An E-mail utility is built into the Registration Tab for convenient sending of the registration file to be processed.

1,2,3 Step Setup

3 Step Installation– By completing a few simple steps, MDMS can be fully functional in just minutes.

Step One: ActiveSync and install the MonDriver (device driver) onto the mobile device

Step Two: Open the MonView (workstation .htm console) file within your web browser.

Step Three: Enter the IP Address of the mobile device on the network you want to connect too.

Supported Platforms

Mobile Device

- Windows Mobile 5/6
- Windows CE 4.2, 5.0, 6.0+

Workstation OS

- 2000, XP, 2003, Vista, 2008
- Linux Ubuntu

Workstation

- Windows Internet Explorer 6+
- FireFox 2+

www.georgiasoftworks.com/gsw_mdms/