



Registration/Licensing

To run GSWBrowse on a Windows device you must register the software to have a valid license. Each copy of GSWBrowse is licensed for a single instance to run on a single device. The software will operate with full functionality without registration for evaluation purposes; however you will be reminded that the instance of GSWBrowse is not running a valid license when starting GSWBrowse and periodically thereafter.



Figure 1: Licensed and Evaluation Diagram

Registration entails just a few steps that involve GSWBrowse generating a unique Product ID (alphanumeric sequence of characters) for the device and providing this Identification to Georgia SoftWorks so a **Serial Number** (alphanumeric sequence of characters) can be generated. Georgia SoftWorks provides the Serial Number required to complete the registration.

GSWBrowse offers multiple registration techniques in order to provide flexibility and convenience for a variety of environments. Regardless of the technique, a Product ID is used to generate a Serial Number that is used for the registration.

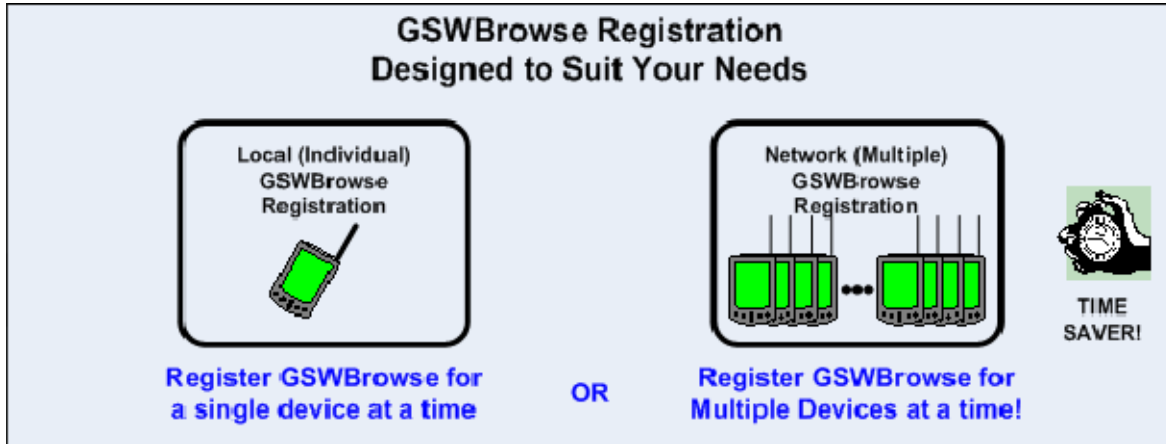


Figure 2: GSWBrowse Registration Techniques

Individual (Local License) GSWBrowse Registration

1. Run the Registration utility (RegUser) by selecting Licensing menu item as shown below by using the Menu Bar. View -> Licensing

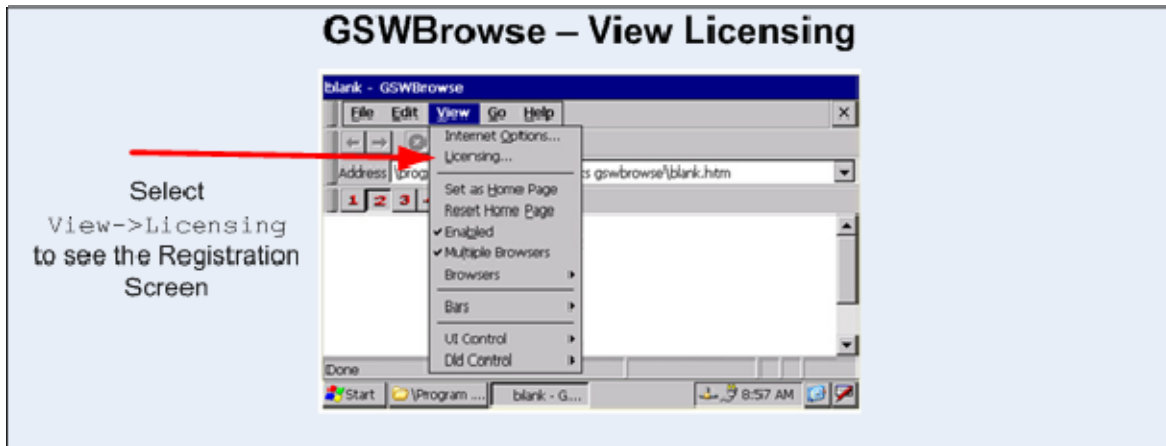


Figure 3: Menu Bar View -> Licensing

This opens the Registration form dialog as show in Figure 4 below.

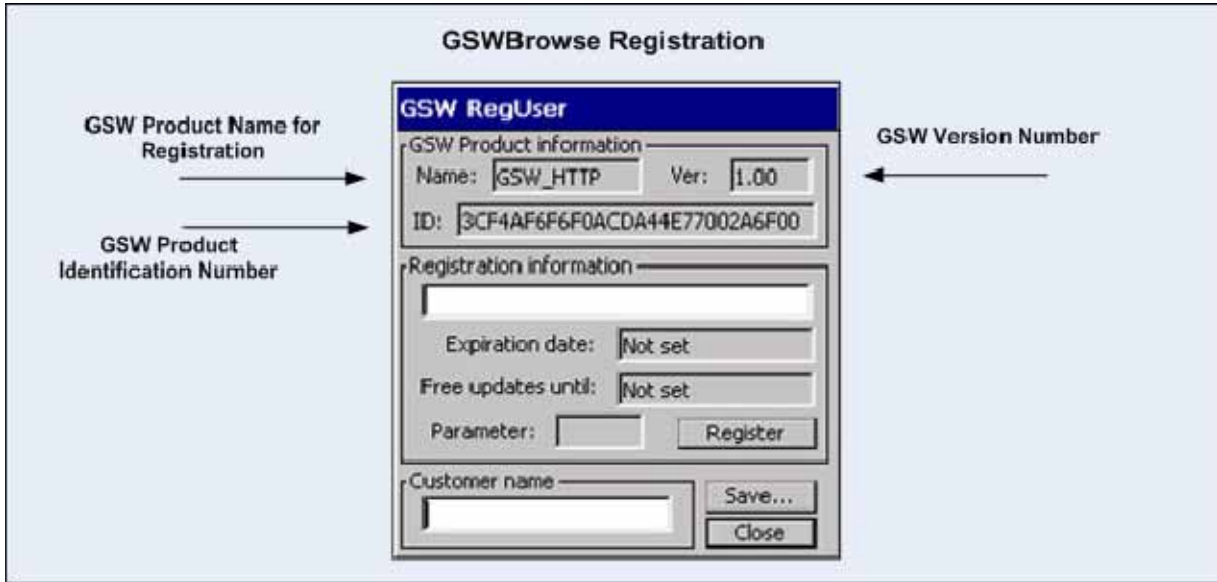


Figure 4: Registration Dialog

Certain GSW Product information is automatically filled by GSWBrowse. This includes the Name, version and Product Identification number.

Step 1: Complete the Customer Name Field. Simply enter the customer name in this field. This helps in verifying the registration request.

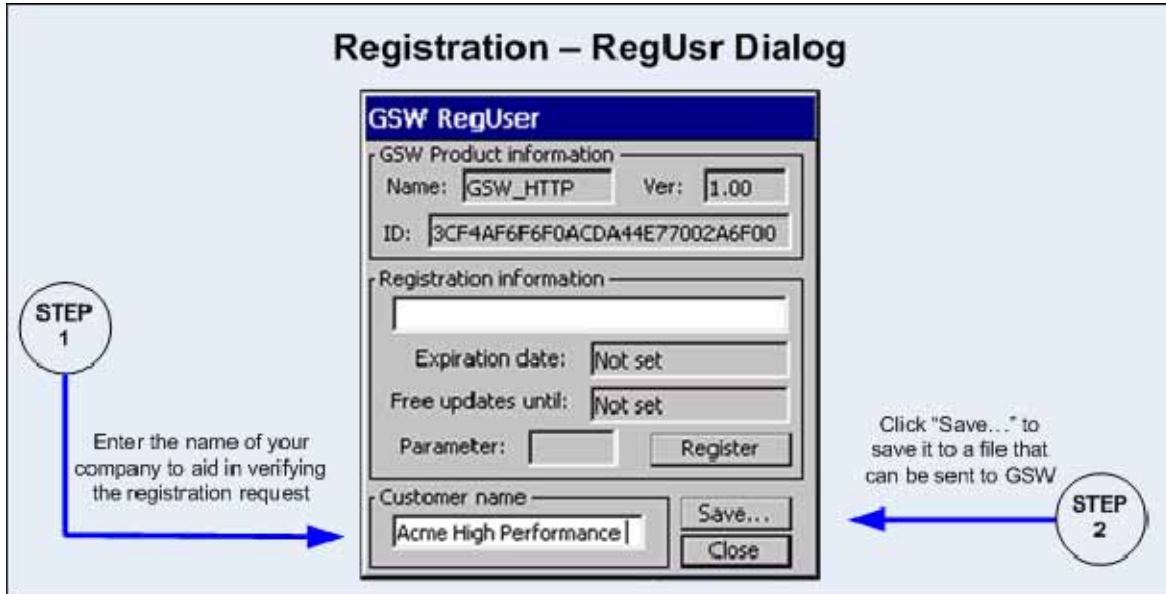


Figure 5: Registration Dialog - Customer Name and Save

Step 2: Click Save and save the registration information to the text file named `register.txt`

The registration information must be provided to Georgia SoftWorks to obtain the Serial Number. Several methods are available for your convenience. The preferred method is via email; however fax or telephone can be also used.

EMAIL

Save the information to a file and email it to Georgia SoftWorks - *Preferred method*.

The registration information was saved when you clicked the Save button on the GSW RegUsr screen. Please email this file to Georgia SoftWorks registration@georgiasoftworks.com requesting registration.

FAX

Please print the register.txt file that was saved and fax the request to Georgia SoftWorks - 706.265.1020

TELEPHONE

Once Georgia SoftWorks receives the information, we can generate a Serial Number on demand. We will reply back via Fax or email. You may close the registration program at this time. Georgia SoftWorks - 706.265.1018



Apply the Serial Number

When the Serial Number is provided, it will need to be entered in the Serial Number field in the Registration Utility (RegUser) on the device. There are several options to accomplish the entry of the serial number.

- This can be done simply by entering the Serial Number from the keyboard of the device.

OR

- The `Register.txt` file received from GSW can be transferred to the device and the Serial Number copied/pasted from the file to the Serial Number field in the Registration utility.

OR

- If you are setup to use the Network (Multiple) Registration technique then take the `LICENSE.XML` file received from GSW and place it in the appropriate location on the license server. When GSWBrowse is launched it will automatically recognize the Serial Number.



Network (Multiple) Registration

In many environments, an administrator may be responsible for multiple devices ranging from a few to hundreds or even thousands. Recognizing the burden of having to register each device individually, Georgia SoftWorks has provided a network registration technique that substantially reduces the effort and time required. A high level overview describing the process follows.

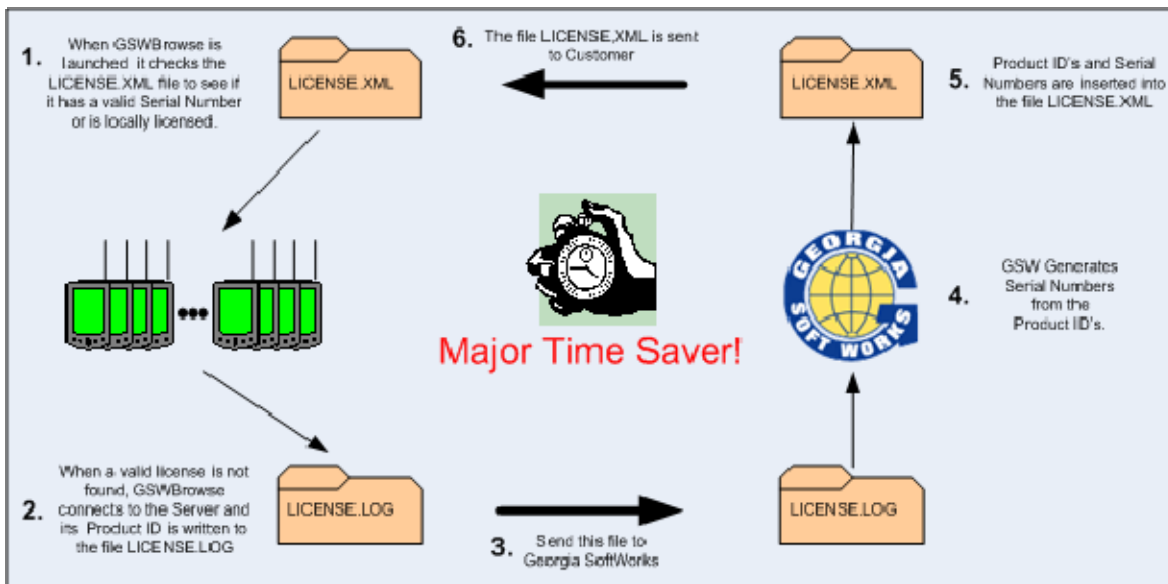


Figure 6: Network Registration – High Level Overview - Multiple GSWBrowse's

Each of the following items corresponds to a number in the above figure. **(1)** When a GSWBrowse is launched it checks the LICENSE.XML file to determine if a Serial Number is associated with its Product Identification. If there is a Serial Number associated with the Product ID, the license is validated. Otherwise GSWBrowse checks to see if it is locally licensed. **(2)** If there is not a Serial Number in the LICENSE.XML file and it is not locally licensed then the Product ID is sent to the server and written to the LICENSE.LOG file.

To register multiple browsers, simply launch GSWBrowse on each device and each Product Id will be written to the LICENSE.LOG file. **(3)** Next send the file to Georgia SoftWorks (email is preferred). **(4)** GSW will take each Product ID and generate an associated Serial Number. **(5)** The Product IDs and Serial Numbers will be placed in a file named LICENSE.XML and **(6)** sent back to the customer.



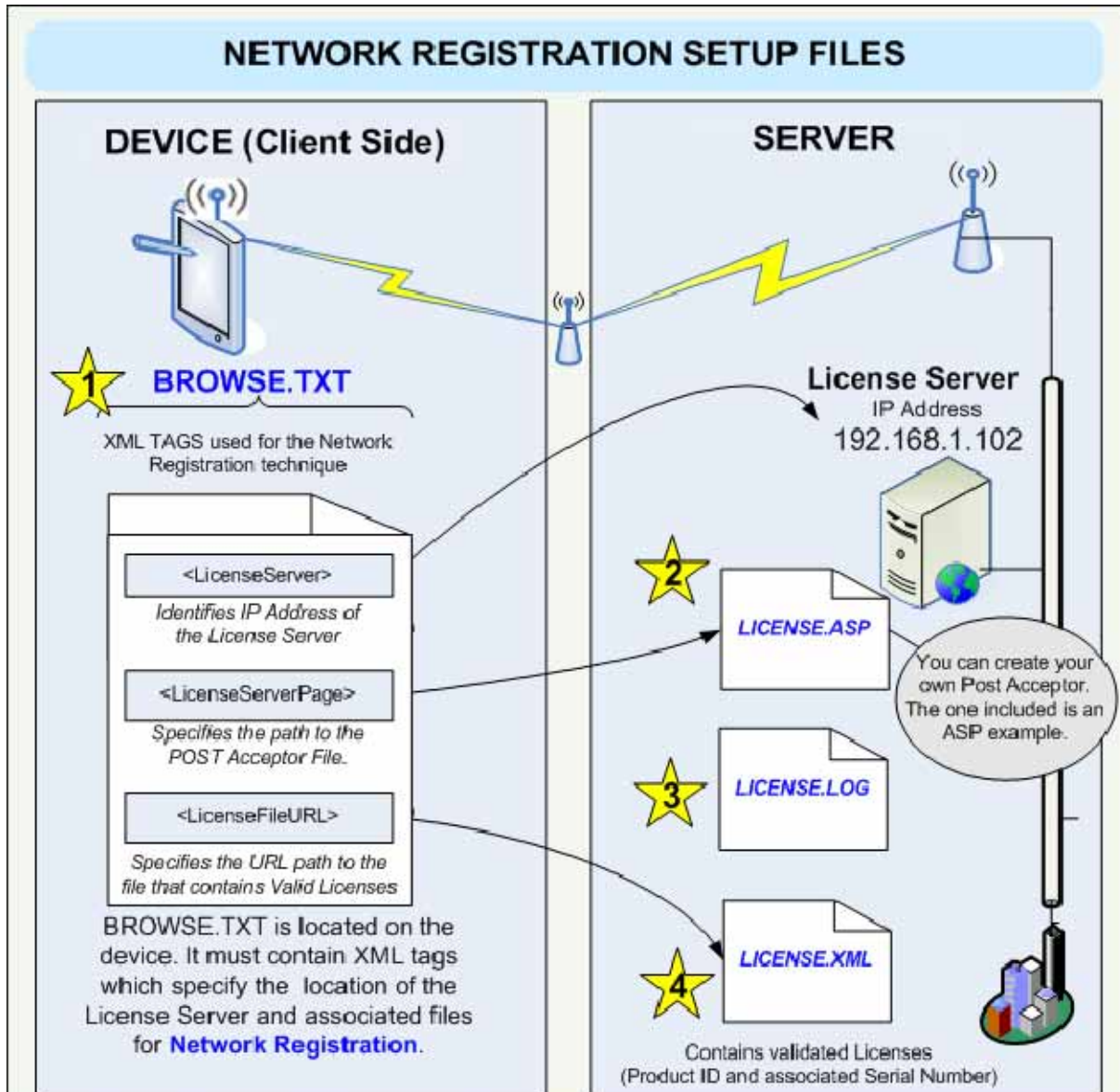
The customer takes the LICENSE.XML file and places it in the appropriate location on the server. The next time GSWBrowse is launched it will recognize the Serial Number associated with its Product ID and validate the license. Alternatively, the Serial Numbers can be manually entered in each Browser.

Figure 7 is a visual overview of the files needed for setup. *One* file is needed on the *client* and *three* files are needed on the *License Server*. Each of the files is identified in the yellow star in the figure below. Working examples of each file can be found in the IMPORTANT FILES section on [page 236](#).



Registration

GSWBrowse



- ### Client File for Network Registration
- 1** **BROWSE.TXT** is located on the device. It must contain XML tags which specify the location of the License Server and associated files for **Network Registration**.
- ### Server Files for Network Registration
- 2** **LICENSE.ASP** - This is the Post Acceptor that receives the POST from the GSWBrowse on the device. The example included with GSWBrowse is written in ASP for Windows. You can develop your own POST Acceptor using the development tools with which you are familiar.
 - 3** **LICENSE.LOG** - Each time GSWBrowse is launched it will write its Product ID to this file if it does not have a valid license. This file is sent via email to Georgia SoftWorks where Serial Numbers are generated for each Product ID.
 - 4** **LICENSE.XML** - This is the file received from Georgia SoftWorks that contains validated Licenses. GSWBrowse on the device will check this file to determine if it has a valid license.



Figure 7: Network Registration Setup File Diagram

Network Registration Setup

Implementing the Network Registration entails a few configuration steps.

1. Modify the client side in the file GSWBROWSE.TXT so it has the correct paths to the Server with the Licensing information. GSWBROWSE.TXT is ***installed on the Device*** in its persistent folder. The persistent folder location is device specific. Please review the device documentation to determine the location of its persistent folder.

```
<device persistent folder>/Georgia SoftWorks GSWBrowse/
```

2. Launch GSWBrowse on each device. This causes each GSWBrowse to generate and send its Product ID to the LICENSE.LOG file on the server.
3. Email the LICENSE.LOG file to registration@georgiasoftworks.com
4. Georgia SoftWorks will validate and generate Serial Numbers for each Product ID and email a LICENSE.XML back.
5. Place the file LICENSE.XML in the appropriate folder (on the server) identified in the GSWBrowse.txt file (on the device). The next time GSWBrowse is launched it will identify that a Serial Number is associated with its Product ID. GSWBrowse will validate the Serial Number and upon success will be licensed.

GSWBROWSE.TXT

This is a client side file that provides GSWBrowse with configuration information. Some of the information contained in GSWBROWSE.TXT is used to identify the location of specific files on your web server. An example of GSWBROWSE.TXT can be viewed on [page 236](#). ^[2]

License Server

The location of the server where the License (Registration) files reside. The XML Tag <LicenseServer> is used to specify the IP address of the computer with the Licensing files. An entry such as the one below should be entered in the file.

Syntax

```
<LicenseServer>IP Address of License Server</LicenseServer>
```

Example



```
<LicenseServer>192.168.1.102</LicenseServer>
```

(Of course put your server's IP address between the License Server Tags, not the one in our example)

License Server Page

The path to the *Post Acceptor* file. XML tag `<LicenseServerPage>` is used to specify the path to the Post Acceptor file. An entry such as the one below should be entered in the file.

Syntax

```
<LicenseServerPage>Path to POST Acceptor
File</LicenseServerPage>
```

Example

```
<LicenseServerPage>/gswbrowse/licensing/license.asp</LicenseServerPage>
```

The included example ([page 237](#)) is a working example of a Post Acceptor ASP file. Those familiar with POST Acceptor files can write your own custom acceptor file using your favorite development tools.

License Server Port

Optional XML tag specifies the HTTP port where the data is posted.

Syntax

```
<LicenseServerPort>PORT NUMBER</LicenseServerPort>
```

where PORT NUMBER is a decimal value for the HTTP Port.

Default: 80, Port 80 is the default value. Unless a different port should be used, this XML tag can be omitted.

Example

```
<LicenseServerPort>81</LicenseServerPort>
```

License File URL

The XML tag that specifies the path to the XML file which contains the Product ID and Serial Number associations for registrations sent back by Georgia SoftWorks.

Syntax



<LicenseFileURL>PATH to License File</LicenseFileURL>

Example

```
<LicenseFileURL>  
http://192.168.1.102/gswbrowse/licensing/license.xml  
</LicenseFileURL>
```



Evaluation License

Prior to registration that obtains a license, GSWBrowse runs in an evaluation mode. This mode is fully functional and is available in order to provide you with a “Try before you Buy” opportunity. GSWBrowse performs a number of checks to determine if a license is present.

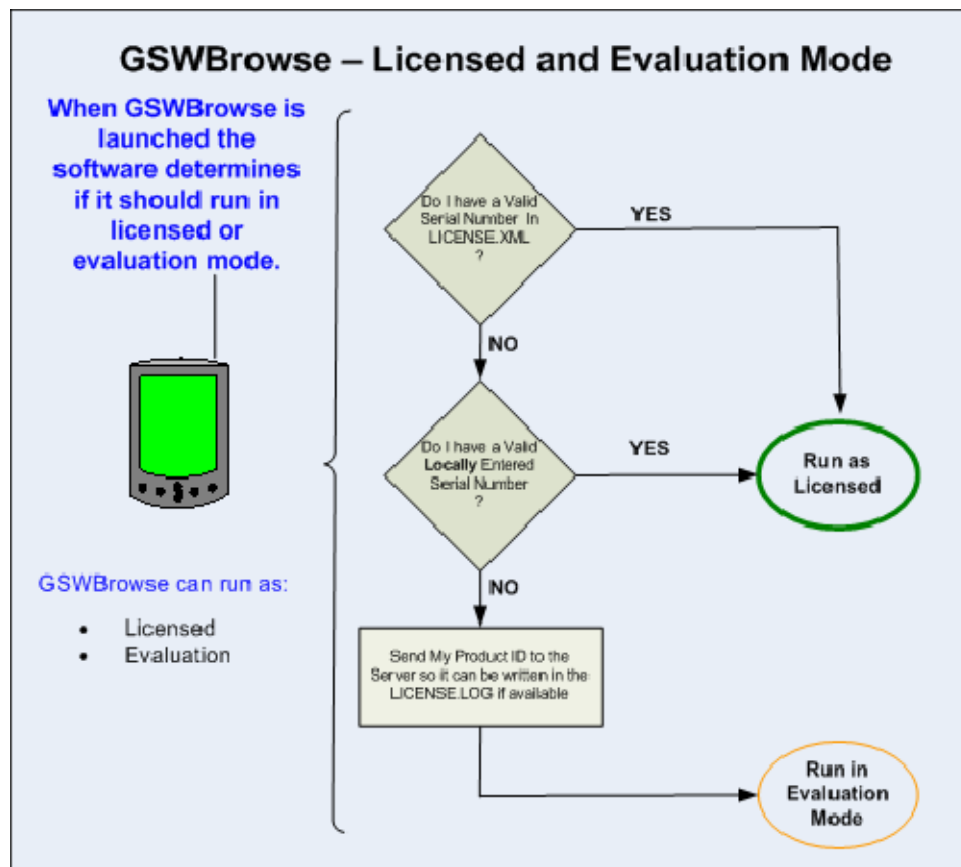


Figure 8: Licensed and Evaluation Flow Diagram

When GSWBrowse is launched, it examines LICENSE.XML to see if there is a Serial Number present. If so, then GSWBrowse runs as Licensed. Otherwise GSWBrowse checks to see if a valid Serial Number has been entered locally. If so, then GSWBrowse runs as Licensed. Otherwise GSWBrowse sends its



Product ID to the server and it is inserted into the LICENSE.LOG file. This is done in preparation for the file being sent to Georgia SoftWorks where Serial Numbers can be generated.

The operational difference in evaluation mode is a periodical pop-up that serves as a reminder to obtain a license. Figure 9 is an example of the evaluation mode pop-up

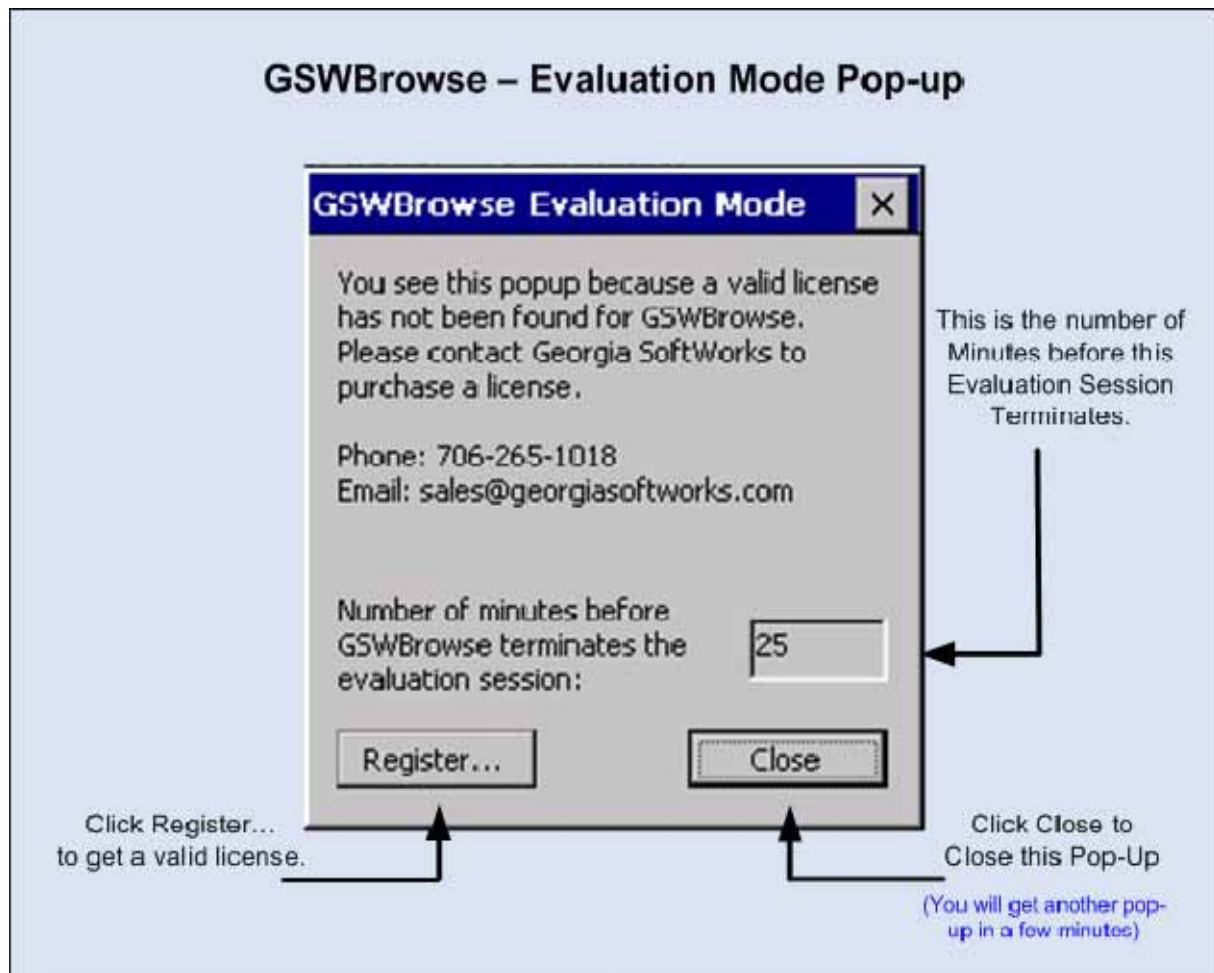


Figure 9: Evaluation Mode Pop-up



Thirty minutes is the amount of time allowed in evaluation mode before the session is terminated. After about five minutes a pop-up will occur with a reminder that this is an evaluation license along with the remaining time before this session is terminated. The frequency of reminders increase as the evaluation timer counts down. When zero, the session terminates and you must restart GSWBrowse.