



Feature: GS_ADMIN - Administrative Utility

The GSW Administrator is a powerful administrative, development and training tool.

With GS_ADMIN you can:

Connect to another telnet session and:

Monitor the Session - Observe the screen exactly as the client sees the screen

Shadow the Session - Similar to Monitoring except interactive input is allowed. You can input data as is you were at the session being shadowed!

Attach to a suspended session - Attach to a suspended telnet session and complete the work in progress. Used with the Session Saver

Yes it's unbelievable but TRUE !

You CAN connect to another Telnet Session and see the screen exactly as it appears at the client screen!

With GS_ADMIN you can also:

Broadcast a Message - Send a user defined message to one or ALL active telnet sessions. Also use the supplied command line broadcast utility (and your favorite scheduler) to schedule the broadcasts for later times.

Terminate a Session - Simple but useful. A system administrator may want to terminate a session for many reasons.

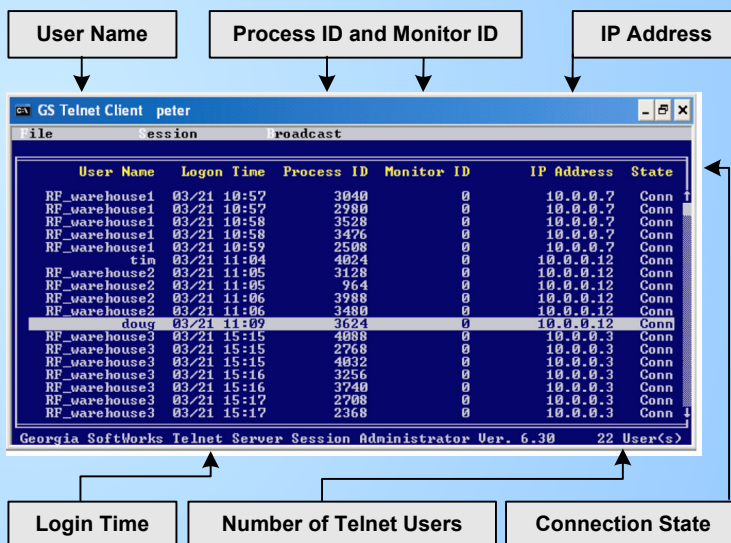
And of course you we ensure that you:

Restrict GS_ADMIN privileges to specific users.

MONITORING • SHADOWING
BROADCASTING
ATTACH • TERMINATE

All these features are provided by the GS_ADMIN utility. GS_ADMIN is accessible from Telnet Sessions and/or via the Command Shell on the Server

Obtain important information about your telnet users quickly



Quality Assurance - A supervisor can monitor data entry of employees.

Training - A senior application user can remotely help a trainee understand and use a application.

Debugging - A developer can remotely observe an application phenomenon that a user is describing. Reduce dependence on verbal descriptions.

Administrative - Ensure that users are using resources properly.

Security - Administrator can monitor user that are connected via telnet.

Notify users about system upgrades and maintenance