

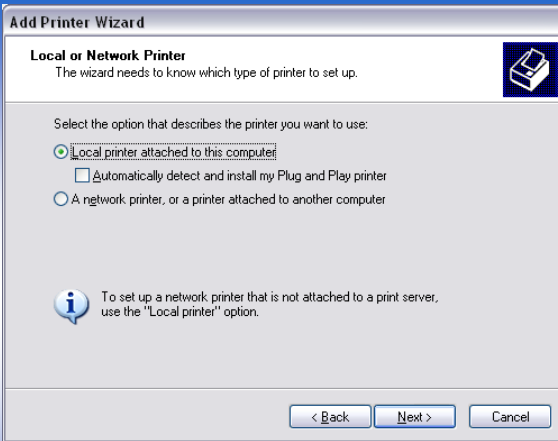
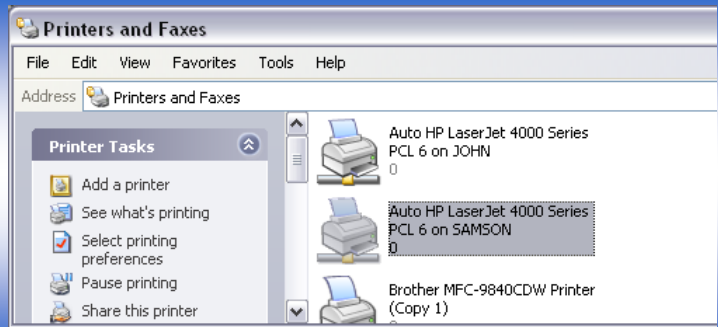


# GSW Enhanced USB Client Side Printing

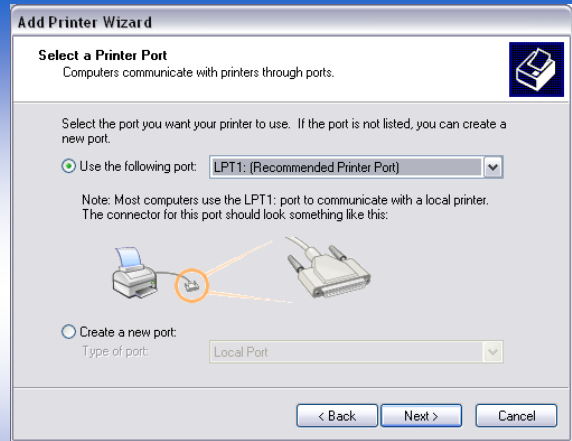
## Server Side *part one* Configuring the Virtual Printer

### I. Add Printer

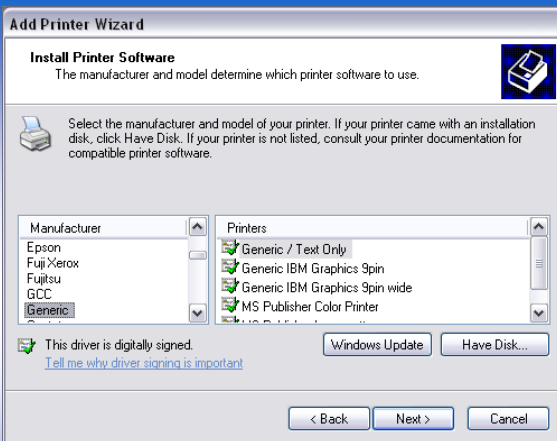
- Click the Windows Start button.
- Open Control Panel.
- Open Printers and Faxes.
- Click Add Printer. (upper left)
- When the Wizard opens click Next.



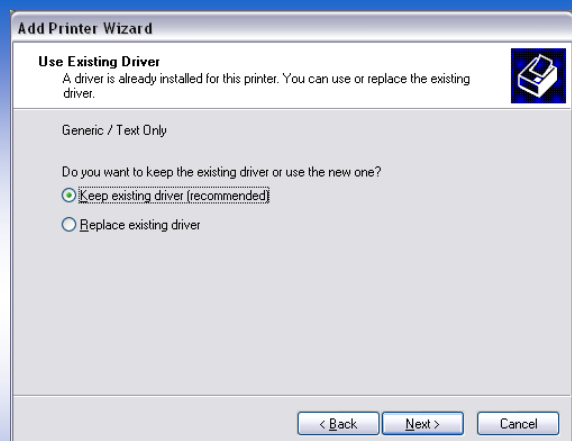
- 2. In the Local or Network printer, only check the 'Local printer attach to the computer. '; Next.



- 3. Select one of the LPT ports. (Do NOT enable print spooling); Next.



- 4. From the manufactures list select **Ge-neric**.
- 5. From the printers select **Generic/Text Only**; Next.



- 6. Keep the existing drivers; Next.



# GSW Enhanced USB Client Side Printing

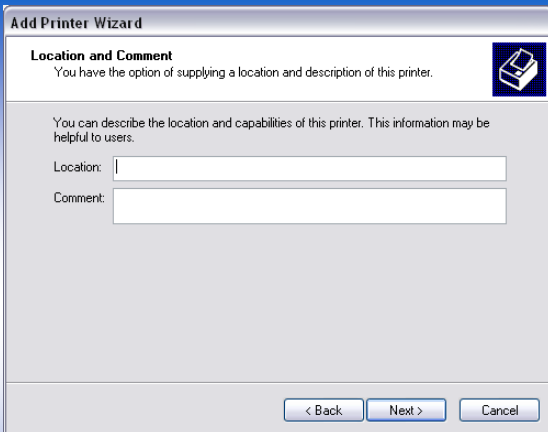
## Server Side *part one* Configuring the Virtual Printer



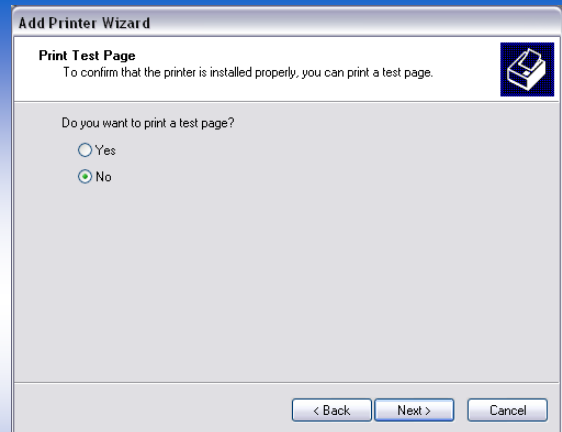
7. Name the printer **GwtnPrinter1** (the name must be spelled exact). Next.



8. Name the shared printer **GwtnPrinterShare1**  
Next; Next; Finish.



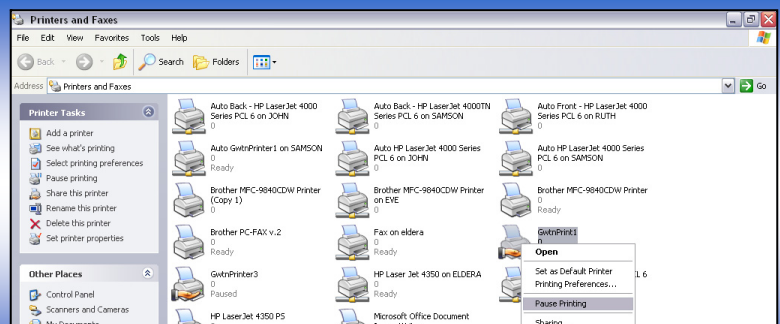
9. Leave Blank. Next.



10. Do not print a test page. Next; Finish.

11. After you have created a virtual shared printer you must *Pause Printing*. Right click on the printer icon and left click on **Pause Printer**.

*Finished with part one*  
*Your Virtual Printer is now set up*



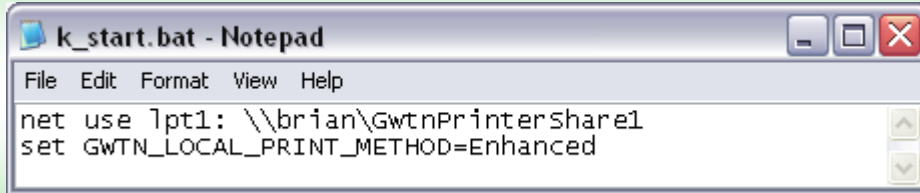


# GSW Enhanced USB Client Side Printing

## Server Side *part two* Configuring Login Scripts

1. Create or edit the `k_start.bat` file (or `c_start.bat` file) to include the script  

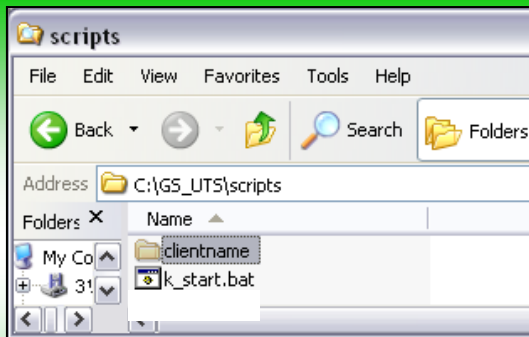
```
net use lpt1: \\computername\GwtnPrinterShare1
set GWTN_LOCAL_PRINT_METHOD_Enhanced
```



**lpt1** = the printer port

**brian** = server name

**GwtnPrinterShare1** = printer name



2. Place the newly created script into the clients log-in script folder. The location is `C:\GS_UTS\scripts\clientsname`.

### Difference between C or K scripts

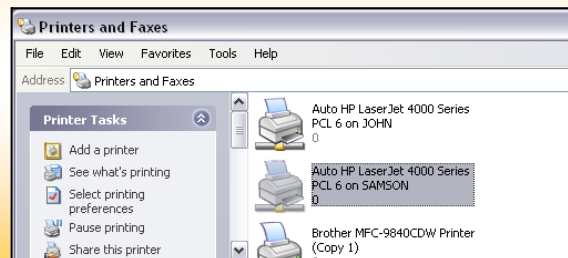
- Create a login script `k_start.bat` when you want the session console to return to a `C:\>` when the script is completed. Generally the script is completed when the application it started is ended.
- Create a login script `c_start.bat` when you want the session console to close when the script is completed.

*Finished with part two*

## Client Side *part three* Configuring the USB Printer

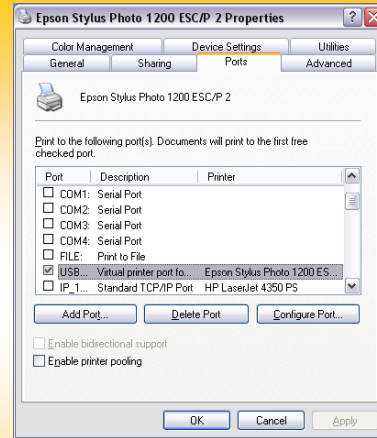
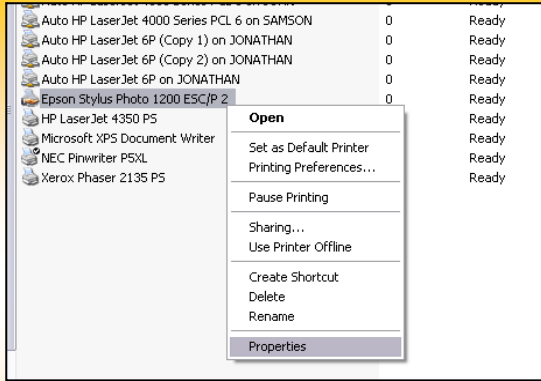
If you need to install a new USB printer, do so in the normal fashion. USB printers are installed to a USBx port. Once the USB printer has an icon located in the Printer and Faxes Window, follow the steps below to configure the USB printer to work with GSW\_UTS Client Side Printing.

1. Open the USB Printer properties.  
Click the Windows Start button.  
Open Control Panel.  
Open Printers and Faxes.

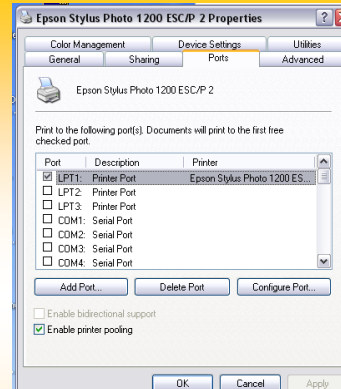
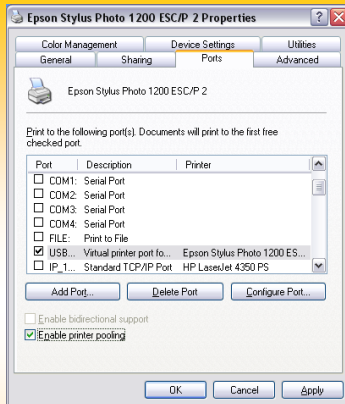




# GSW Enhanced USB Client Side Printing



- Find the icon of the USB printer and Right Click and then select Properties.
- Select the Ports Tab. Scroll down to the USB port what list the printer. Check the box left of the USB port.



- Enable print pooling by checking the box left of Enable print spooling.
- Scroll to the top and check the box to the left of LPT1. Click Apply; Click OK.

Finished with part three  
Enhanced USB Client Side Printing configurations are complete

**Client Side login screen**  
Client side confirmation

```

C:\> GS SSH Client 10.0.0.5

C:\WINDOWS\system32>net use lpt3: \\brian\GwtNPrinterShare3
The command completed successfully.

C:\WINDOWS\system32>set GWTN_LOCAL_PRINT_METHOD=Enhanced
C:\WINDOWS\system32>
  
```

A successful printer setup will show on the first line of the client console window